

A7105

Leader in Biomolecular Solutions for Life Science



NAA20 Rabbit pAb

Catalog No.: A7105

1 Publications

Basic Information

Observed MW

20kDa

Calculated MW

20kDa

Category

Polyclonal Antibody

Applications

WB,IHC-P,IP,ELISA

Cross-Reactivity

Human,Mouse,Rat

Background

NAT5 is a component of N-acetyltransferase complex B (NatB). Human NatB performs cotranslational N(alpha)-terminal acetylation of methionine residues when they are followed by asparagine (Starheim et al., 2008 [PubMed 18570629]).

Recommended Dilutions

WB 1:500 - 1:2000

IHC-P 1:50 - 1:200

IP 0.5µg-4µg antibody for
200µg-400µg extracts
of whole cells

ELISA Recommended starting
concentration is 1
µg/mL. Please optimize
the concentration
based on your specific
assay requirements.

Immunogen Information

Gene ID

51126

Swiss Prot

P61599

Immunogen

Recombinant fusion protein containing a sequence corresponding to amino acids 49-178 of human NAA20 (NP_057184.1).

Synonyms

NAT3; NAT5; MRT73; NAT3P; NAT5P; dJ1002M8.1; NAA20

Product Information

Source

Rabbit

Isotype

IgG

Purification

Affinity purification

Contact



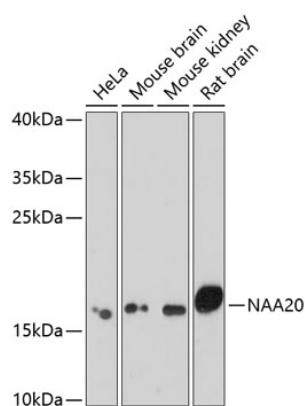
www.abclonal.com

Storage

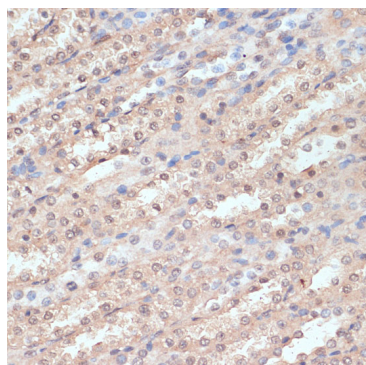
Store at -20°C. Avoid freeze / thaw cycles.

Buffer: PBS with 0.02% Sodium azide, 50% glycerol, pH7.3.

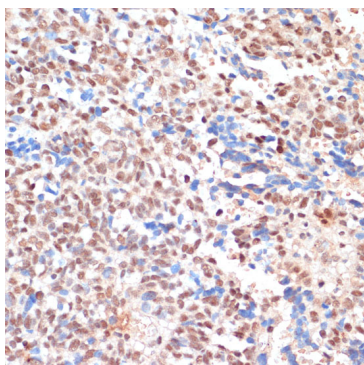
Validation Data



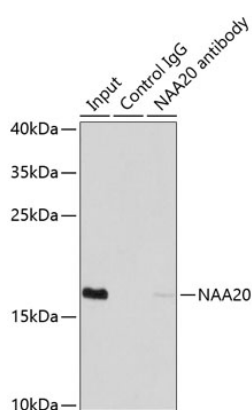
Western blot analysis of various lysates using NAA20 Rabbit pAb (A7105) at 1:1000 dilution. Secondary antibody: HRP-conjugated Goat anti-Rabbit IgG (H+L) (AS014) at 1:10000 dilution. Lysates/proteins: 25µg per lane. Blocking buffer: 3% nonfat dry milk in TBST. Detection: ECL Enhanced Kit (RM00021). Exposure time: 90s.



Immunohistochemistry analysis of paraffin-embedded Rat kidney using NAA20 Rabbit pAb (A7105) at dilution of 1:100 (40x lens). Microwave antigen retrieval performed with 0.01M PBS Buffer (pH 7.2) prior to IHC staining.



Immunohistochemistry analysis of paraffin-embedded Human oophoroma using NAA20 Rabbit pAb (A7105) at dilution of 1:100 (40x lens). Microwave antigen retrieval performed with 0.01M PBS Buffer (pH 7.2) prior to IHC staining.



Immunoprecipitation analysis of 200 µg extracts of MCF7 cells using 1 µg NAA20 antibody (A7105). Western blot was performed from the immunoprecipitate using NAA20 antibody (A7105) at a dilution of 1:1000.