

A7099

Leader in Biomolecular Solutions for Life Science



C16orf80 Rabbit pAb

Catalog No.: A7099

Basic Information

Observed MW

23kDa

Calculated MW

23kDa

Category

Polyclonal Antibody

Applications

WB,IF/ICC,ELISA

Cross-Reactivity

Human,Mouse,Rat

Background

Enables RNA binding activity. Involved in several processes, including positive regulation of feeding behavior; protein polyglutamylation; and regulation of cell motility. Located in centriole; ciliary basal body; and nucleoplasm.

Recommended Dilutions

WB 1:500 - 1:1000

IF/ICC 1:50 - 1:100

ELISA Recommended starting concentration is 1 µg/mL. Please optimize the concentration based on your specific assay requirements.

Immunogen Information

Gene ID

29105

Swiss Prot

Q9Y6A4

Immunogen

A synthetic peptide corresponding to a sequence within amino acids 94-193 of human C16orf80 (NP_037374.1).

Synonyms

GTL3; BUG22; EVORF; fSAP23; C16orf80

Contact

 www.abclonal.com

Product Information

Source

Rabbit

Isotype

IgG

Purification

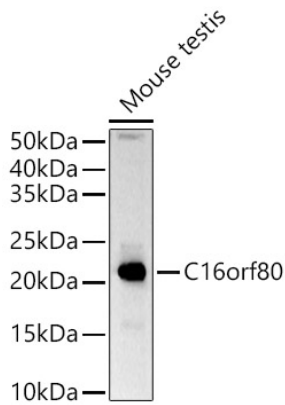
Affinity purification

Storage

Store at -20°C. Avoid freeze / thaw cycles.

Buffer: PBS with 0.05% proclin300,50% glycerol,pH7.3.

Validation Data



Western blot analysis of lysates from Mouse testis, using C16orf80 Rabbit pAb (A7099) at 1:1000 dilution.

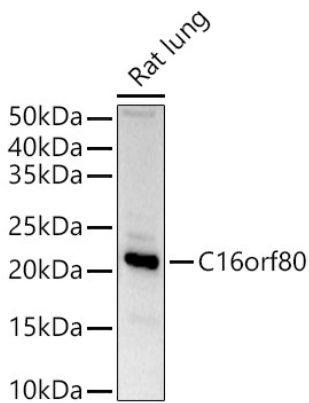
Secondary antibody: HRP-conjugated Goat anti-Rabbit IgG (H+L) (AS014) at 1:10000 dilution.

Lysates/proteins: 25µg per lane.

Blocking buffer: 3% nonfat dry milk in TBST.

Detection: ECL Basic Kit (RM00020).

Exposure time: 30s.



Western blot analysis of lysates from Rat lung, using C16orf80 Rabbit pAb (A7099) at 1:1000 dilution.

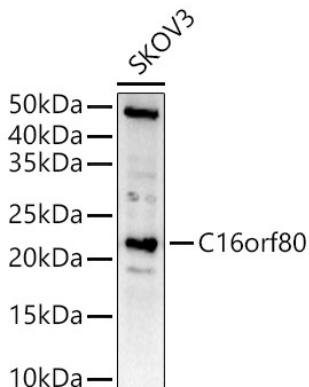
Secondary antibody: HRP-conjugated Goat anti-Rabbit IgG (H+L) (AS014) at 1:10000 dilution.

Lysates/proteins: 25µg per lane.

Blocking buffer: 3% nonfat dry milk in TBST.

Detection: ECL Basic Kit (RM00020).

Exposure time: 90s.



Western blot analysis of lysates from SKOV3 cells, using C16orf80 Rabbit pAb (A7099) at 1:1000 dilution.

Secondary antibody: HRP-conjugated Goat anti-Rabbit IgG (H+L) (AS014) at 1:10000 dilution.

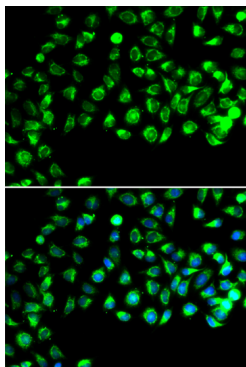
Lysates/proteins: 25µg per lane.

Blocking buffer: 3% nonfat dry milk in TBST.

Detection: ECL Basic Kit (RM00020).

Exposure time: 180s.

Validation Data



Immunofluorescence analysis of A549 cells using C16orf80 Rabbit pAb (A7099). Secondary antibody: Cy3-conjugated Goat anti-Rabbit IgG (H+L) (AS007) at 1:500 dilution. Blue: DAPI for nuclear staining.