

A7051

Leader in Biomolecular Solutions for Life Science



SCO2 Rabbit pAb

Catalog No.: A7051 **2 Publications**

Basic Information

Observed MW

30kDa

Calculated MW

30kDa

Category

Polyclonal Antibody

Applications

WB,IHC-P,ELISA

Cross-Reactivity

Human,Mouse,Rat

Background

Cytochrome c oxidase (COX) catalyzes the transfer of electrons from cytochrome c to molecular oxygen, which helps to maintain the proton gradient across the inner mitochondrial membrane that is necessary for aerobic ATP production. Human COX is a multimeric protein complex that requires several assembly factors; this gene encodes one of the COX assembly factors. The encoded protein is a metallochaperone that is involved in the biogenesis of cytochrome c oxidase subunit II. Mutations in this gene are associated with fatal infantile encephalomyopathy and myopia 6.

Recommended Dilutions

WB 1:500 - 1:2000

IHC-P 1:50 - 1:200

ELISA Recommended starting concentration is 1 µg/mL. Please optimize the concentration based on your specific assay requirements.

Immunogen Information

Gene ID

9997

Swiss Prot

O43819

Immunogen

Recombinant protein (or fragment). This information is considered to be commercially sensitive.

Synonyms

TP; MYP6; TYMP; ECGF1; SCO1L; MC4DN2; CEMCOX1; PD-ECGF; TdRPase; Gliostatin; SCO2

Contact

 www.abclonal.com

Product Information

Source

Rabbit

Isotype

IgG

Purification

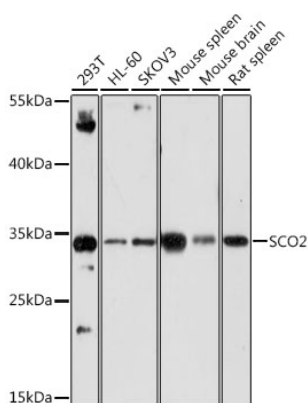
Affinity purification

Storage

Store at -20°C. Avoid freeze / thaw cycles.

Buffer: PBS containing 50% glycerol, preserved with proclin300 or sodium azide (as specified on the Certificate of Analysis), pH 7.3.

Validation Data



Western blot analysis of various lysates using SCO2 Rabbit pAb (A7051) at 1:1000 dilution.

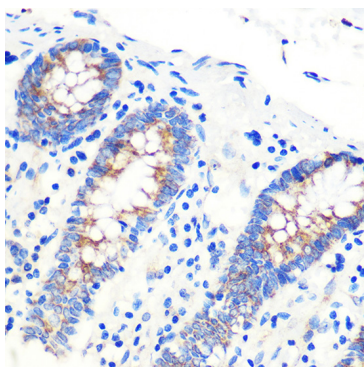
Secondary antibody: HRP-conjugated Goat anti-Rabbit IgG (H+L) (AS014) at 1:10000 dilution.

Lysates/proteins: 25µg per lane.

Blocking buffer: 3% nonfat dry milk in TBST.

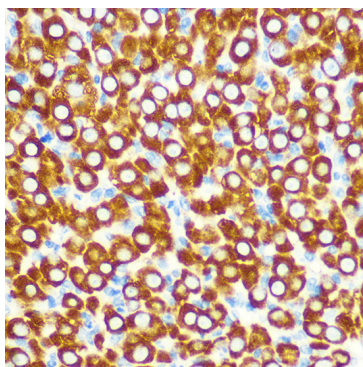
Detection: ECL Enhanced Kit (RM00021).

Exposure time: 3min.



Immunohistochemistry analysis of paraffin-embedded Human colon using SCO2 Rabbit pAb (A7051) at dilution of 1:100 (40x lens).

Microwave antigen retrieval performed with 0.01M PBS Buffer (pH 7.2) prior to IHC staining.



Immunohistochemistry analysis of paraffin-embedded Rat ovary using SCO2 Rabbit pAb (A7051) at dilution of 1:100 (40x lens). Microwave antigen retrieval performed with 0.01M PBS Buffer (pH 7.2) prior to IHC staining.