

A6969

Leader in Biomolecular Solutions for Life Science



RLN2 Rabbit pAb

Catalog No.: A6969

Basic Information

Observed MW

21kDa

Calculated MW

21kDa

Category

Polyclonal Antibody

Applications

WB,IHC-P,ELISA

Cross-Reactivity

Human,Rat

Background

This gene encodes a member of the relaxin subfamily and insulin superfamily of peptide hormones. In humans there are three non-allelic relaxin genes. This gene encodes multiple protein isoforms, at least one of which undergoes proteolytic processing. This processing generates relaxin A and B chains that are linked by disulfide bonds to form the mature peptide hormone. This hormone plays a role in the male and female reproductive systems and was initially noted for its role in pregnancy. This protein also plays broader roles in the cardiovascular system, including in the regulation of blood pressure and control of heart rate, and data from animal models shows that this protein may have anti-fibrotic and cardioprotective effects.

Recommended Dilutions

WB 1:500 - 1:2000

IHC-P 1:50 - 1:200

ELISA Recommended starting concentration is 1 µg/mL. Please optimize the concentration based on your specific assay requirements.

Immunogen Information

Gene ID

6019

Swiss Prot

P04090

Immunogen

Recombinant protein (or fragment). This information is considered to be commercially sensitive.

Synonyms

H2; RLXH2; H2-RLX; bA12D24.1.1; bA12D24.1.2; RLN2

Contact

 www.abclonal.com

Product Information

Source

Rabbit

Isotype

IgG

Purification

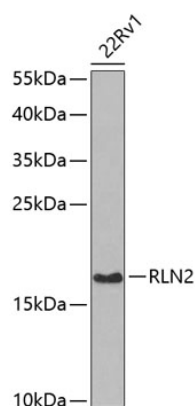
Affinity purification

Storage

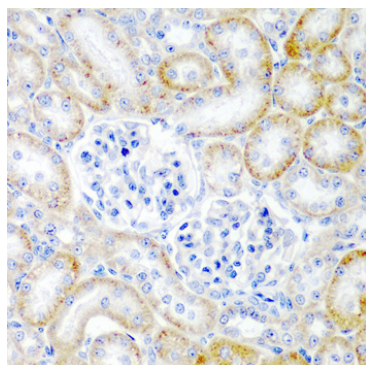
Store at -20°C. Avoid freeze / thaw cycles.

Buffer: PBS with 0.02% sodium azide, 50% glycerol, pH7.3.

Validation Data



Western blot analysis of lysates from 22Rv1 cells, using RLN2 Rabbit pAb (A6969) at 1:1000 dilution.
Secondary antibody: HRP-conjugated Goat anti-Rabbit IgG (H+L) (AS014) at 1:10000 dilution.
Lysates/proteins: 25µg per lane.
Blocking buffer: 3% nonfat dry milk in TBST.
Detection: ECL Basic Kit (RM00020).
Exposure time: 30s.



Immunohistochemistry analysis of paraffin-embedded Rat kidney using RLN2 Rabbit pAb (A6969) at dilution of 1:200 (40x lens). Microwave antigen retrieval performed with 0.01M PBS Buffer (pH 7.2) prior to IHC staining.