

A6912

Leader in Biomolecular Solutions for Life Science



# BLOC1S1 Rabbit pAb

Catalog No.: A6912 **1 Publications**

## Basic Information

### Observed MW

14kDa

### Calculated MW

17kDa

### Category

Polyclonal Antibody

### Applications

WB,ELISA

### Cross-Reactivity

Mouse

## Background

BLOC1S1 is a component of the ubiquitously expressed BLOC1 multisubunit protein complex. BLOC1 is required for normal biogenesis of specialized organelles of the endosomal-lysosomal system, such as melanosomes and platelet dense granules (Starcevic and Dell'Angelica, 2004 [PubMed 15102850]).

## Recommended Dilutions

WB 1:500 - 1:2000

## Immunogen Information

### Gene ID

2647

### Swiss Prot

P78537

### Immunogen

Recombinant fusion protein containing a sequence corresponding to amino acids 29-153 of human BLOC1S1 (NP\_001478.2).

### Synonyms

RT14; BLOS1; MICoA; BORCS1; GCN5L1; BLOC1S1

## Contact



[www.abclonal.com](http://www.abclonal.com)

## Product Information

### Source

Rabbit

### Isotype

IgG

### Purification

Affinity purification

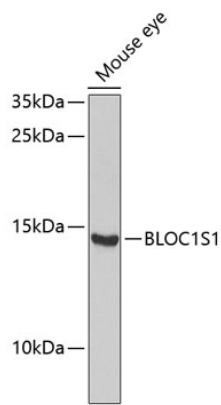
### Storage

Store at -20°C. Avoid freeze / thaw cycles.

Buffer: PBS with 0.02% sodium azide,50% glycerol,pH7.3.

## Validation Data

---



Western blot analysis of lysates from mouse eye, using BLOC1S1 Rabbit pAb (A6912) at 1:1000 dilution.  
Secondary antibody: HRP Goat Anti-Rabbit IgG (H+L) (AS014) at 1:10000 dilution.  
Lysates/proteins: 25µg per lane.  
Blocking buffer: 3% nonfat dry milk in TBST.  
Detection: ECL Enhanced Kit (RM00021).  
Exposure time: 30s.