

A6866

Leader in Biomolecular Solutions for Life Science



# ALPPL2 Rabbit pAb

Catalog No.: A6866 **1 Publications**

## Basic Information

### Observed MW

70kDa

### Calculated MW

57kDa

### Category

Polyclonal Antibody

### Applications

WB, ELISA

### Cross-Reactivity

Human, Mouse

## Background

There are at least four distinct but related alkaline phosphatases: intestinal, placental, placental-like, and liver/bone/kidney (tissue non-specific). The product of this gene is a membrane bound glycosylated enzyme, localized to testis, thymus and certain germ cell tumors, that is closely related to both the placental and intestinal forms of alkaline phosphatase.

## Recommended Dilutions

WB 1:500 - 1:2000

## Immunogen Information

### Gene ID

251

### Swiss Prot

P10696

### Immunogen

Recombinant fusion protein containing a sequence corresponding to amino acids 20-280 of human ALPPL2 (NP\_112603.2).

### Synonyms

GCAP; ALPPL; ALPPL2

## Contact



[www.abclonal.com](http://www.abclonal.com)

## Product Information

### Source

Rabbit

### Isotype

IgG

### Purification

Affinity purification

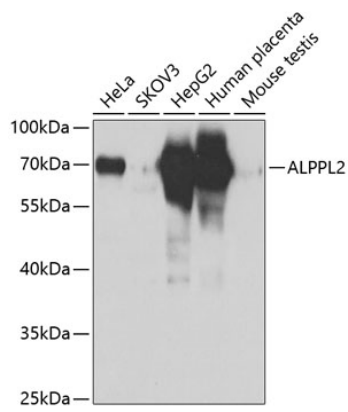
### Storage

Store at -20°C. Avoid freeze / thaw cycles.

Buffer: PBS with 0.02% sodium azide, 50% glycerol, pH 7.3.

## Validation Data

---



Western blot analysis of extracts of various cell lines, using ALPPL2 antibody (A6866) at 1:1000 dilution.  
Secondary antibody: HRP Goat Anti-Rabbit IgG (H+L) (AS014) at 1:10000 dilution.  
Lysates/proteins: 25µg per lane.  
Blocking buffer: 3% nonfat dry milk in TBST.  
Detection: ECL Basic Kit (RM00020).  
Exposure time: 3s.