

A6843

Leader in Biomolecular Solutions for Life Science



CDKN1C/p57 Kip2 Rabbit mAb

Catalog No.: A6843

Recombinant

1 Publications

Basic Information

Observed MW

57kDa

Calculated MW

32kDa

Category

Monoclonal Antibody

Applications

WB,ELISA

Cross-Reactivity

Human

CloneNo number

ARC1424

Background

This gene is imprinted, with preferential expression of the maternal allele. The encoded protein is a tight-binding, strong inhibitor of several G1 cyclin/Cdk complexes and a negative regulator of cell proliferation. Mutations in this gene are implicated in sporadic cancers and Beckwith-Wiedemann syndrome, suggesting that this gene is a tumor suppressor candidate. Three transcript variants encoding two different isoforms have been found for this gene.

Recommended Dilutions

WB 1:2000 - 1:8000

ELISA Recommended starting concentration is 1 µg/mL. Please optimize the concentration based on your specific assay requirements.

Immunogen Information

Gene ID

1028

Swiss Prot

P49918

Immunogen

Synthetic peptide. This information is considered to be commercially sensitive.

Synonyms

BWS; WBS; p57; BWCR; KIP2; p57Kip2; CDKN1C/p57 Kip2

Contact

 www.abclonal.com

Product Information

Source

Rabbit

Isotype

IgG

Purification

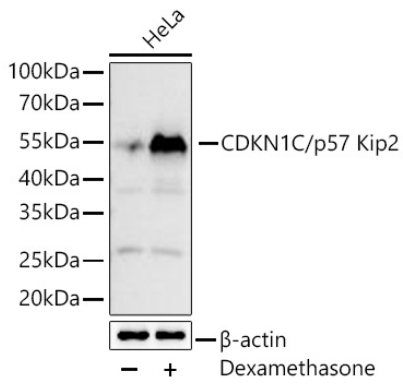
Affinity purification

Storage

Store at -20°C. Avoid freeze / thaw cycles.

Buffer: PBS containing 50% glycerol and 0.05% BSA, preserved with proclin300 or sodium azide (as specified on the Certificate of Analysis), pH 7.3.

Validation Data



Western blot analysis of lysates from HeLa cells using CDKN1C/p57 Kip2 Rabbit mAb (A6843) at 1:2000 dilution incubated overnight at 4°C. HeLa cells were treated with Dexamethasone (500 nM) at 37°C for 16hrs .

Secondary antibody: HRP-conjugated Goat anti-Rabbit IgG (H+L) (AS014) at 1:10000 dilution.

Lysates/proteins: 25 μ g per lane.

Blocking buffer: 3 % nonfat dry milk in TBST.

Detection: ECL Basic Kit (RM00020).

Exposure time: 10s.