

A6816

Leader in Biomolecular Solutions for Life Science



# PHOX2B Rabbit mAb

Catalog No.: A6816 **Recombinant**

## Basic Information

### Observed MW

35kDa

### Calculated MW

32kDa

### Category

SMab Recombinant Monoclonal Antibody

### Applications

WB,ELISA

### Cross-Reactivity

Human,Mouse

### CloneNo number

ARC1420

## Background

The DNA-associated protein encoded by this gene is a member of the paired family of homeobox proteins localized to the nucleus. The protein functions as a transcription factor involved in the development of several major noradrenergic neuron populations and the determination of neurotransmitter phenotype. The gene product is linked to enhancement of second messenger-mediated activation of the dopamine beta-hydroxylase, c-fos promoters and several enhancers, including cyclic amp-response element and serum-response element. Expansion of a 20 amino acid polyalanine tract in this protein by 5-13 aa has been associated with congenital central hypoventilation syndrome.

## Recommended Dilutions

WB 1:500 - 1:1000

## Immunogen Information

### Gene ID

8929

### Swiss Prot

Q99453

### Immunogen

A synthetic peptide corresponding to a sequence within amino acids 215-314 of human PHOX2B (NP\_003915.2).

### Synonyms

CCHS; PMX2B; NBLST2; NBPhox; PHOX2B

## Contact

 [www.abclonal.com](http://www.abclonal.com)

## Product Information

### Source

Rabbit

### Isotype

IgG

### Purification

Affinity purification

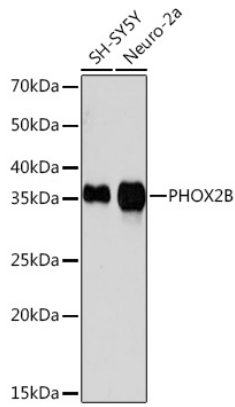
### Storage

Store at -20°C. Avoid freeze / thaw cycles.

Buffer: PBS with 0.02% sodium azide,0.05% BSA,50% glycerol,pH7.3.

## Validation Data

---



Western blot analysis of extracts of various cell lines, using PHOX2B Rabbit mAb (A6816) at 1:1000 dilution.  
Secondary antibody: HRP Goat Anti-Rabbit IgG (H+L) (AS014) at 1:10000 dilution.  
Lysates/proteins: 25µg per lane.  
Blocking buffer: 3% nonfat dry milk in TBST.  
Detection: ECL Basic Kit (RM00020).  
Exposure time: 3min.