

A6787

Leader in Biomolecular Solutions for Life Science



DCAF7 Rabbit pAb

Catalog No.: A6787

Basic Information

Observed MW

39kDa

Calculated MW

39kDa

Category

Polyclonal Antibody

Applications

WB,IHC-P,IF/ICC,ELISA

Cross-Reactivity

Human,Mouse,Rat

Background

This gene encodes a protein with multiple WD40 repeats which facilitate protein-protein interactions and thereby enable the assembly of multiprotein complexes. This protein has been shown to function as a scaffold protein for protein complexes involved in kinase signaling. This highly conserved gene is present in eukaryotic plants, fungi, and animals. The ortholog of this gene was first identified in plants as a key regulator of anthocyanin biosynthesis and flower pigmentation. Alternative splicing results in multiple transcript variants.

Recommended Dilutions

WB 1:500 - 1:1000

IHC-P 1:50 - 1:200

IF/ICC 1:50 - 1:200

ELISA Recommended starting concentration is 1 µg/mL. Please optimize the concentration based on your specific assay requirements.

Immunogen Information

Gene ID

10238

Swiss Prot

P61962

Immunogen

Recombinant fusion protein containing a sequence corresponding to amino acids 1-342 of human DCAF7 (NP_005819.3).

Synonyms

AN11; HAN11; WDR68; SWAN-1; DCAF7

Product Information

Source

Rabbit

Isotype

IgG

Purification

Affinity purification

Storage

Store at -20°C. Avoid freeze / thaw cycles.

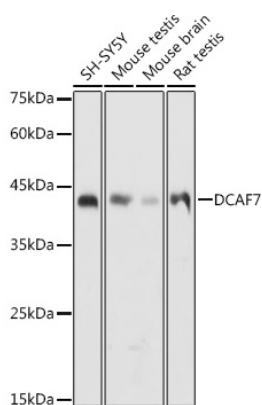
Buffer: PBS with 0.05% proclin300,50% glycerol,pH7.3.

Contact

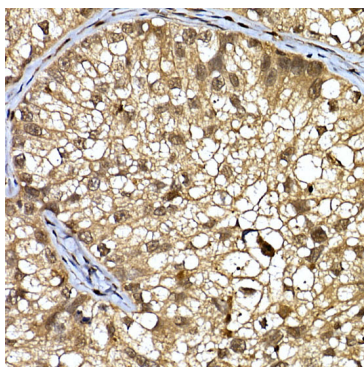


www.abclonal.com

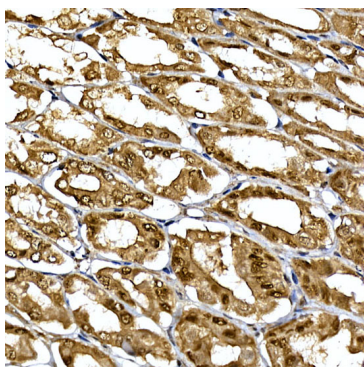
Validation Data



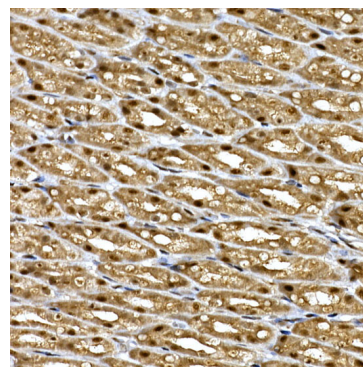
Western blot analysis of various lysates using DCAF7 Rabbit pAb (A6787) at 1:1000 dilution.
 Secondary antibody: HRP-conjugated Goat anti-Rabbit IgG (H+L) (AS014) at 1:10000 dilution.
 Lysates/proteins: 25µg per lane.
 Blocking buffer: 3% nonfat dry milk in TBST.
 Detection: ECL Basic Kit (RM00020).
 Exposure time: 10s.



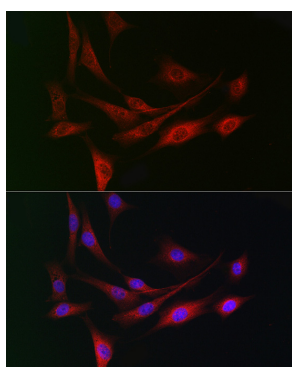
Immunohistochemistry analysis of paraffin-embedded Human lung cancer using DCAF7 Rabbit pAb (A6787) at dilution of 1:100 (40x lens). High pressure antigen retrieval performed with 0.01M Citrate Bufferr (pH 6.0) prior to IHC staining.



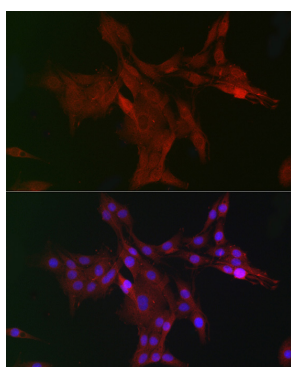
Immunohistochemistry analysis of paraffin-embedded Mouse stomach using DCAF7 Rabbit pAb (A6787) at dilution of 1:100 (40x lens). High pressure antigen retrieval performed with 0.01M Citrate Bufferr (pH 6.0) prior to IHC staining.



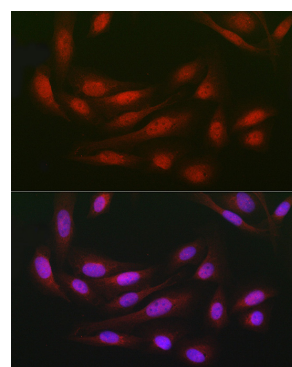
Immunohistochemistry analysis of paraffin-embedded Rat stomach using DCAF7 Rabbit pAb (A6787) at dilution of 1:100 (40x lens). High pressure antigen retrieval performed with 0.01M Citrate Bufferr (pH 6.0) prior to IHC staining.



Immunofluorescence analysis of NIH/3T3 cells using DCAF7 Rabbit pAb (A6787) at dilution of 1:100 (40x lens). Secondary antibody: Cy3-conjugated Goat anti-Rabbit IgG (H+L) (AS007) at 1:500 dilution. Blue: DAPI for nuclear staining.



Immunofluorescence analysis of PC-12 cells using DCAF7 Rabbit pAb (A6787) at dilution of 1:100 (40x lens). Secondary antibody: Cy3-conjugated Goat anti-Rabbit IgG (H+L) (AS007) at 1:500 dilution. Blue: DAPI for nuclear staining.



Immunofluorescence analysis of U2OS cells using DCAF7 Rabbit pAb (A6787) at dilution of 1:100 (40x lens). Secondary antibody: Cy3-conjugated Goat anti-Rabbit IgG (H+L) (AS007) at 1:500 dilution. Blue: DAPI for nuclear staining.