

A6702

Leader in Biomolecular Solutions for Life Science



PP2A Catalytic α Rabbit pAb

Catalog No.: A6702

6 Publications

Basic Information

Observed MW

36kDa

Calculated MW

36kDa

Category

Polyclonal Antibody

Applications

WB,IHC-P,IF/ICC,IP,ELISA

Cross-Reactivity

Human,Mouse,Rat

Background

This gene encodes the phosphatase 2A catalytic subunit. Protein phosphatase 2A is one of the four major Ser/Thr phosphatases, and it is implicated in the negative control of cell growth and division. It consists of a common heteromeric core enzyme, which is composed of a catalytic subunit and a constant regulatory subunit, that associates with a variety of regulatory subunits. This gene encodes an alpha isoform of the catalytic subunit.

Recommended Dilutions

WB 1:1000 - 1:5000

IHC-P 1:50 - 1:200

IF/ICC 1:50 - 1:200

IP 0.5 μ g-4 μ g antibody for
200 μ g-500 μ g extracts
of whole cells

ELISA Recommended starting
concentration is 1
 μ g/mL. Please optimize
the concentration
based on your specific
assay requirements.

Immunogen Information

Gene ID

5515

Swiss Prot

P67775

Immunogen

Recombinant fusion protein containing a sequence corresponding to amino acids 1-309 of human PP2A Catalytic α (NP_002706.1).

Synonyms

RP-C; PP2Ac; PP2CA; NEDLBA; PP2Calpha; PP2A Catalytic α

Product Information

Source

Rabbit

Isotype

IgG

Purification

Affinity purification

Storage

Store at -20°C. Avoid freeze / thaw cycles.

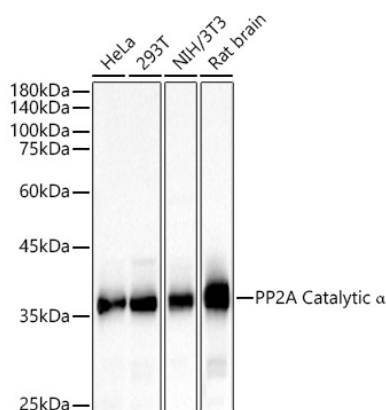
Buffer: PBS with 0.02% sodium azide,50% glycerol,pH7.3.

Contact



www.abclonal.com

Validation Data



Western blot analysis of various lysates, using PP2A Catalytic α Rabbit pAb (A6702) at 1:2000 dilution.

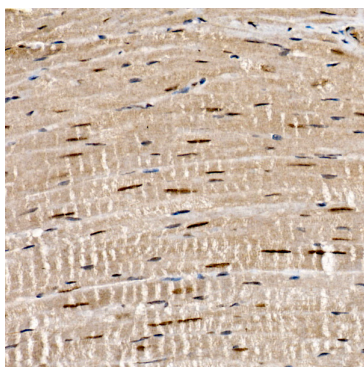
Secondary antibody: HRP-conjugated Goat anti-Rabbit IgG (H+L) (AS014) at 1:10000 dilution.

Lysates/proteins: 25 μ g per lane.

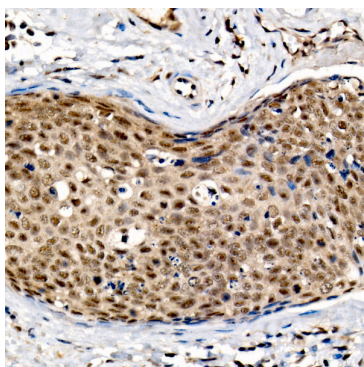
Blocking buffer: 3% nonfat dry milk in TBST.

Detection: ECL Basic Kit (RM00020).

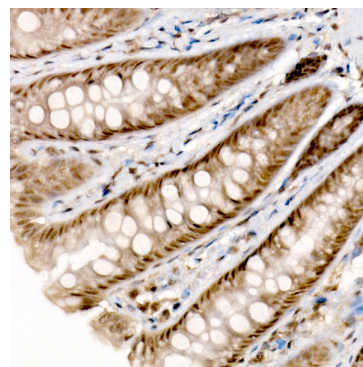
Exposure time: 10s.



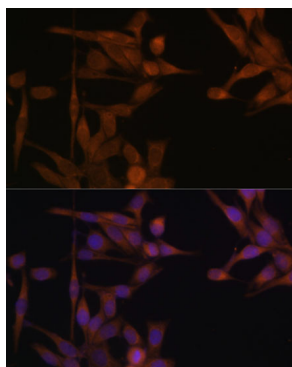
Immunohistochemistry analysis of paraffin-embedded Mouse heart tissue using PP2A Catalytic α Rabbit pAb (A6702) at a dilution of 1:100 (40x lens). High pressure antigen retrieval was performed with 0.01 M citrate buffer (pH 6.0) prior to IHC staining.



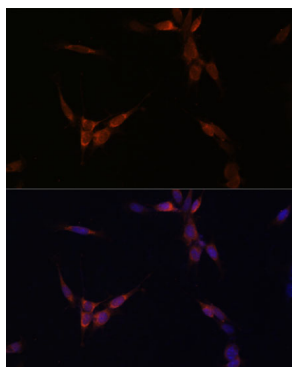
Immunohistochemistry analysis of paraffin-embedded Human cervical cancer tissue using PP2A Catalytic α Rabbit pAb (A6702) at a dilution of 1:100 (40x lens). High pressure antigen retrieval was performed with 0.01 M citrate buffer (pH 6.0) prior to IHC staining.



Immunohistochemistry analysis of paraffin-embedded Rat colon tissue using PP2A Catalytic α Rabbit pAb (A6702) at a dilution of 1:100 (40x lens). High pressure antigen retrieval was performed with 0.01 M citrate buffer (pH 6.0) prior to IHC staining.

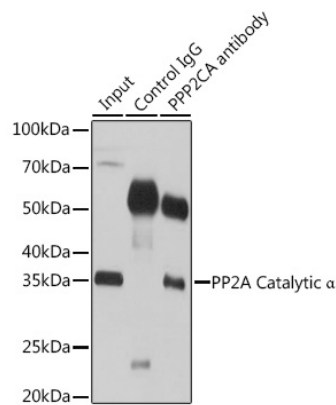


Immunofluorescence analysis of HeLa cells using PP2A Catalytic α Rabbit pAb (A6702) at dilution of 1:100. Secondary antibody: Cy3-conjugated Goat anti-Rabbit IgG (H+L) (AS007) at 1:500 dilution. Blue: DAPI for nuclear staining.

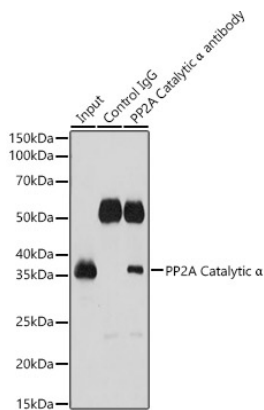


Immunofluorescence analysis of NIH/3T3 cells using PP2A Catalytic α Rabbit pAb (A6702) at dilution of 1:100. Secondary antibody: Cy3-conjugated Goat anti-Rabbit IgG (H+L) (AS007) at 1:500 dilution. Blue: DAPI for nuclear staining.

Validation Data



Immunoprecipitation analysis of 200 µg extracts of 293T cells using 3 µg PP2A Catalytic α antibody (A6702). Western blot was performed from the immunoprecipitate using PP2A Catalytic α antibody (A6702) at a dilution of 1:1000.



Immunoprecipitation analysis of 500 µg extracts of Rat brain cells using 3 µg PP2A Catalytic α antibody (A6702). Western blot was performed from the immunoprecipitate using PP2A Catalytic α antibody (A6702) at a dilution of 1:1000.