

A6656

Leader in Biomolecular Solutions for Life Science



## MLPH Rabbit pAb

Catalog No.: A6656

### Basic Information

#### Observed MW

75kDa

#### Calculated MW

66kDa

#### Category

Polyclonal Antibody

#### Applications

WB, IHC-P, IF/ICC, ELISA

#### Cross-Reactivity

Human, Mouse, Rat

### Background

This gene encodes a member of the exophilin subfamily of Rab effector proteins. The protein forms a ternary complex with the small Ras-related GTPase Rab27A in its GTP-bound form and the motor protein myosin Va. A similar protein complex in mouse functions to tether pigment-producing organelles called melanosomes to the actin cytoskeleton in melanocytes, and is required for visible pigmentation in the hair and skin. A mutation in this gene results in Griscelli syndrome type 3, which is characterized by a silver-gray hair color and abnormal pigment distribution in the hair shaft. Several alternatively spliced transcript variants encoding different isoforms have been found for this gene.

### Recommended Dilutions

WB	1:500 - 1:2000
IHC-P	1:50 - 1:200
IF/ICC	1:50 - 1:200

### Immunogen Information

#### Gene ID

79083

#### Swiss Prot

Q9BV36

#### Immunogen

Recombinant fusion protein containing a sequence corresponding to amino acids 301-600 of human MLPH (NP\_077006.1).

#### Synonyms

SLAC2-A; MLPH

### Contact



[www.abclonal.com](http://www.abclonal.com)

### Product Information

#### Source

Rabbit

#### Isotype

IgG

#### Purification

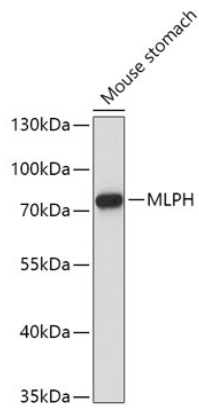
Affinity purification

#### Storage

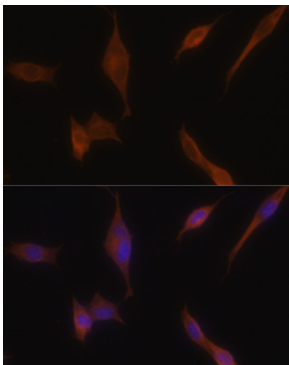
Store at -20°C. Avoid freeze / thaw cycles.

Buffer: PBS with 0.02% sodium azide, 50% glycerol, pH 7.3.

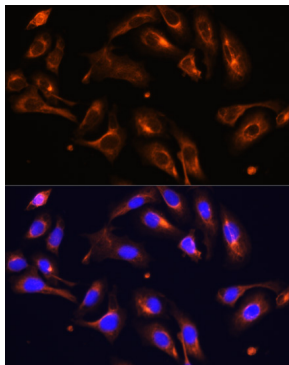
## Validation Data



Western blot analysis of extracts of Mouse stomach, using MLPH antibody (A6656) at 1:1000 dilution.  
Secondary antibody: HRP Goat Anti-Rabbit IgG (H+L) (A5014) at 1:10000 dilution.  
Lysates/proteins: 25µg per lane.  
Blocking buffer: 3% nonfat dry milk in TBST.  
Detection: ECL Basic Kit (RM00020).  
Exposure time: 180s.



Immunofluorescence analysis of NIH-3T3 cells using MLPH antibody (A6656) at dilution of 1:100. Blue: DAPI for nuclear staining.



Immunofluorescence analysis of U-2 OS cells using MLPH antibody (A6656) at dilution of 1:100. Blue: DAPI for nuclear staining.