

A6639

Leader in Biomolecular Solutions for Life Science



KIF3A Rabbit pAb

Catalog No.: A6639

Basic Information

Observed MW

80kDa

Calculated MW

80kDa

Category

Polyclonal Antibody

Applications

WB,IHC-P,IF/ICC,IP,ELISA

Cross-Reactivity

Human,Mouse,Rat

Background

Enables protein phosphatase binding activity; small GTPase binding activity; and spectrin binding activity. Involved in protein localization to cell junction and protein transport. Located in centriole and centrosome. Part of kinesin II complex. Colocalizes with spindle microtubule.

Recommended Dilutions

WB 1:500 - 1:2000

IHC-P 1:100 - 1:500

IF/ICC 1:50 - 1:200

IP 0.5µg-4µg antibody for
200µg-400µg extracts
of whole cells

ELISA Recommended starting
concentration is 1
µg/mL. Please optimize
the concentration
based on your specific
assay requirements.

Immunogen Information

Gene ID

11127

Swiss Prot

Q9Y496

Immunogen

Recombinant protein (or fragment). This information is considered to be commercially sensitive.

Synonyms

FLA10; KLP-20; KIF3A

Product Information

Source

Rabbit

Isotype

IgG

Purification

Affinity purification

Storage

Store at -20°C. Avoid freeze / thaw cycles.

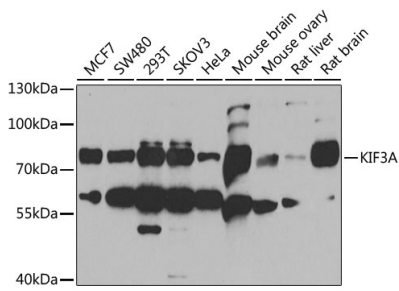
Buffer: PBS containing 50% glycerol, preserved with proclin300 or sodium azide (as specified on the Certificate of Analysis), pH 7.3.

Contact



www.abclonal.com

Validation Data



Western blot analysis of various lysates using KIF3A Rabbit pAb (A6639) at 1:1000 dilution.

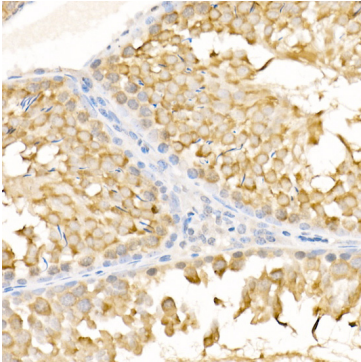
Secondary antibody: HRP-conjugated Goat anti-Rabbit IgG (H+L) (AS014) at 1:10000 dilution.

Lysates/proteins: 25µg per lane.

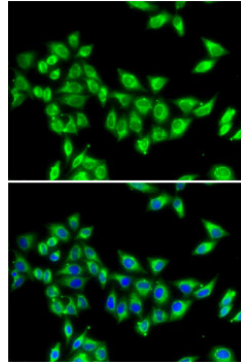
Blocking buffer: 3% nonfat dry milk in TBST.

Detection: ECL Basic Kit (RM00020).

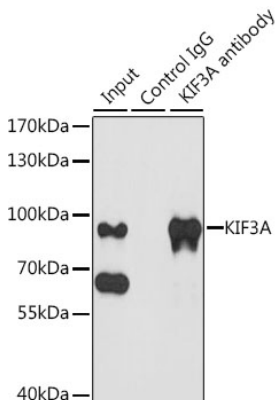
Exposure time: 90s.



Immunohistochemistry analysis of paraffin-embedded Rat testis using KIF3A Rabbit pAb (A6639) at dilution of 1:500 (40x lens). High pressure antigen retrieval was performed with 0.01M Citrate buffer (pH 6.0) prior to IHC staining.



Immunofluorescence analysis of MCF7 cells using KIF3A Rabbit pAb (A6639). Secondary antibody: Cy3-conjugated Goat anti-Rabbit IgG (H+L) (AS007) at 1:500 dilution. Blue: DAPI for nuclear staining.



Immunoprecipitation analysis of 200 µg extracts of MCF-7 cells, using 3 µg KIF3A antibody (A6639). Western blot was performed from the immunoprecipitate using KIF3A antibody (A6639) at a dilution of 1:1000.