

A6638

Leader in Biomolecular Solutions for Life Science



KIF1B Rabbit pAb

Catalog No.: A6638 **2 Publications**

Basic Information

Observed MW

204kDa

Calculated MW

204kDa

Category

Polyclonal Antibody

Applications

WB,ELISA

Cross-Reactivity

Human,Mouse,Rat

Background

Predicted to enable microtubule binding activity and plus-end-directed microtubule motor activity. Predicted to be involved in chemical synaptic transmission; dense core granule cytoskeletal transport; and vesicle-mediated transport. Predicted to act upstream of or within mitochondrion transport along microtubule. Predicted to be located in cytoplasmic vesicle membrane and neuron projection. Predicted to be part of kinesin complex. Predicted to be active in several cellular components, including axon; dendrite; and microtubule. Implicated in Charcot-Marie-Tooth disease type 2A1; carcinoma (multiple); multiple sclerosis; neuroblastoma; and pheochromocytoma. Biomarker of hepatocellular carcinoma.

Recommended Dilutions

WB 1:500 - 1:2000

ELISA Recommended starting concentration is 1 µg/mL. Please optimize the concentration based on your specific assay requirements.

Immunogen Information

Gene ID

23095

Swiss Prot

O60333

Immunogen

Recombinant protein (or fragment). This information is considered to be commercially sensitive.

Synonyms

KLP; CMT2; CMT2A; CMT2A1; HMSNII; NBLST1; KIF1B

Contact

 www.abclonal.com

Product Information

Source

Rabbit

Isotype

IgG

Purification

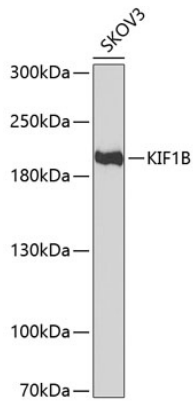
Affinity purification

Storage

Store at -20°C. Avoid freeze / thaw cycles.

Buffer: PBS with 0.02% sodium azide, 50% glycerol, pH7.3.

Validation Data



Western blot analysis of lysates from SKOV3 cells, using KIF1B Rabbit pAb (A6638) at 1:1000 dilution.

Secondary antibody: HRP-conjugated Goat anti-Rabbit IgG (H+L) (AS014) at 1:10000 dilution.

Lysates/proteins: 25µg per lane.

Blocking buffer: 3% nonfat dry milk in TBST.

Detection: ECL Basic Kit (RM00020).

Exposure time: 90s.