

A6594

Leader in Biomolecular Solutions for Life Science



GABBR2 Rabbit pAb

Catalog No.: A6594

2 Publications

Basic Information

Observed MW

122kDa

Calculated MW

106kDa

Category

Polyclonal Antibody

Applications

WB, ELISA

Cross-Reactivity

Human

Background

The multi-pass membrane protein encoded by this gene belongs to the G-protein coupled receptor 3 family and GABA-B receptor subfamily. The GABA-B receptors inhibit neuronal activity through G protein-coupled second-messenger systems, which regulate the release of neurotransmitters, and the activity of ion channels and adenylyl cyclase. This receptor subunit forms an active heterodimeric complex with GABA-B receptor subunit 1, neither of which is effective on its own. Allelic variants of this gene have been associated with nicotine dependence.

Recommended Dilutions

WB 1:500 - 1:2000

ELISA Recommended starting concentration is 1 µg/mL. Please optimize the concentration based on your specific assay requirements.

Immunogen Information

Gene ID

9568

Swiss Prot

O75899

Immunogen

Recombinant protein (or fragment). This information is considered to be commercially sensitive.

Synonyms

HG20; DEE59; GPR51; EIEE59; GPRC3B; NDPLHS; GABABR2; HRIHFB2099; GABBR2

Contact

 www.abclonal.com

Product Information

Source

Rabbit

Isotype

IgG

Purification

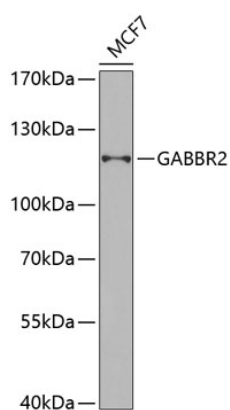
Affinity purification

Storage

Store at -20°C. Avoid freeze / thaw cycles.

Buffer: PBS containing 50% glycerol, preserved with proclin300 or sodium azide (as specified on the Certificate of Analysis), pH 7.3.

Validation Data



Western blot analysis of lysates from MCF-7 cells, using GABBR2 Rabbit pAb (A6594) at 1:1000 dilution.

Secondary antibody: HRP-conjugated Goat anti-Rabbit IgG (H+L) (AS014) at 1:10000 dilution.

Lysates/proteins: 25µg per lane.

Blocking buffer: 3% nonfat dry milk in TBST.

Detection: ECL Basic Kit (RM00020).

Exposure time: 120s.