

A6584

Leader in Biomolecular Solutions for Life Science



ENTPD2 Rabbit pAb

Catalog No.: A6584

Basic Information

Observed MW

Refer to Figures

Calculated MW

54kDa

Category

Polyclonal Antibody

Applications

WB,IF/ICC,ELISA

Cross-Reactivity

Human

Background

The protein encoded by this gene is the type 2 enzyme of the ecto-nucleoside triphosphate diphosphohydrolase family (E-NTPDase). E-NTPDases are a family of ecto-nucleosidases that hydrolyze 5'-triphosphates. This ecto-ATPase is an integral membrane protein. Alternative splicing of this gene results in multiple transcript variants.

Recommended Dilutions

WB 1:500 - 1:2000

IF/ICC 1:50 - 1:100

ELISA Recommended starting concentration is 1 µg/mL. Please optimize the concentration based on your specific assay requirements.

Immunogen Information

Gene ID

954

Swiss Prot

Q9Y5L3

Immunogen

Recombinant fusion protein containing a sequence corresponding to amino acids 28-268 of human ENTPD2 (NP_982293.1).

Synonyms

CD39L1; NTPDase-2; ENTPD2

Contact



www.abclonal.com

Product Information

Source

Rabbit

Isotype

IgG

Purification

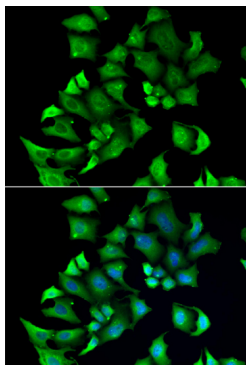
Affinity purification

Storage

Store at -20°C. Avoid freeze / thaw cycles.

Buffer: PBS with 0.02% sodium azide, 50% glycerol, pH7.3.

Validation Data



Immunofluorescence analysis of A549 cells using ENTPD2 Rabbit pAb (A6584). Secondary antibody: Cy3-conjugated Goat anti-Rabbit IgG (H+L) (AS007) at 1:500 dilution. Blue: DAPI for nuclear staining.