

A6580

Leader in Biomolecular Solutions for Life Science



# [KO Validated] EEF1B2 Rabbit pAb

Catalog No.: A6580 **KO Validated** **1 Publications**

## Basic Information

### Observed MW

33kDa

### Calculated MW

25kDa

### Category

Polyclonal Antibody

### Applications

WB,IHC-P,IF/ICC,ELISA

### Cross-Reactivity

Human,Mouse,Rat

## Background

This gene encodes a translation elongation factor. The protein is a guanine nucleotide exchange factor involved in the transfer of aminoacylated tRNAs to the ribosome. Alternative splicing results in three transcript variants which differ only in the 5' UTR.

## Recommended Dilutions

|               |   |
|---------------|---|
| <b>WB</b>     | 1:500 - 1:2000  |
| <b>IHC-P</b>  | 1:50 - 1:200  |
| <b>IF/ICC</b> | 1:50 - 1:200  |
| <b>ELISA</b>  | Recommended starting concentration is 1 µg/mL. Please optimize the concentration based on your specific assay requirements. |

## Contact

 [www.abclonal.com](http://www.abclonal.com)

## Immunogen Information

|                |                   |
|----------------|-------------------|
| <b>Gene ID</b> | <b>Swiss Prot</b> |
| 1933           | P24534            |

### Immunogen

Recombinant protein (or fragment). This information is considered to be commercially sensitive.

### Synonyms

EF1B; EEF1B; EEF1B1; B2

## Product Information

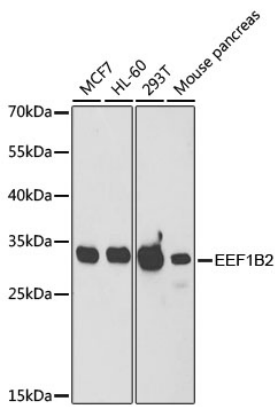
|               |                |                       |
|---------------|----------------|-----------------------|
| <b>Source</b> | <b>Isotype</b> | <b>Purification</b>   |
| Rabbit        | IgG            | Affinity purification |

### Storage

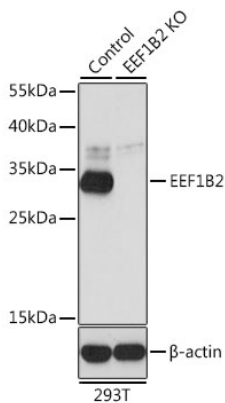
Store at -20°C. Avoid freeze / thaw cycles.

Buffer: PBS containing 50% glycerol, preserved with proclin300 or sodium azide (as specified on the Certificate of Analysis), pH 7.3.

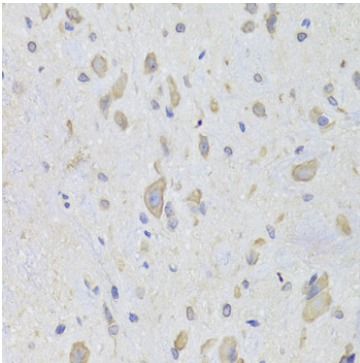
## Validation Data



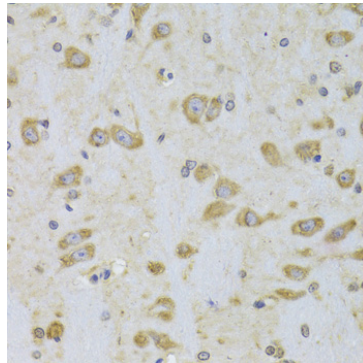
Western blot analysis of various lysates using [KO Validated] EEF1B2 Rabbit pAb (A6580) at 1:1000 dilution.  
Secondary antibody: HRP-conjugated Goat anti-Rabbit IgG (H+L) (AS014) at 1:10000 dilution.  
Lysates/proteins: 25µg per lane.  
Blocking buffer: 3% nonfat dry milk in TBST.  
Detection: ECL Basic Kit (RM00020).  
Exposure time: 90s.



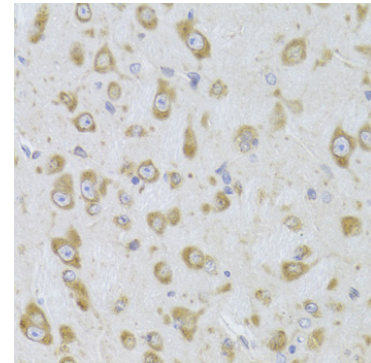
Western blot analysis of lysates from wild type (WT) and EEF1B2 knockout (KO) 293T cells, using [KO Validated] EEF1B2 Rabbit pAb (A6580) at 1:1000 dilution.  
Secondary antibody: HRP-conjugated Goat anti-Rabbit IgG (H+L) (AS014) at 1:10000 dilution.  
Lysates/proteins: 25µg per lane.  
Blocking buffer: 3% nonfat dry milk in TBST.  
Detection: ECL Basic Kit (RM00020).  
Exposure time: 30s.



Immunohistochemistry analysis of paraffin-embedded Rat spinal cord using [KO Validated] EEF1B2 Rabbit pAb (A6580) at dilution of 1:100 (40x lens). Microwave antigen retrieval performed with 0.01M PBS Buffer (pH 7.2) prior to IHC staining.



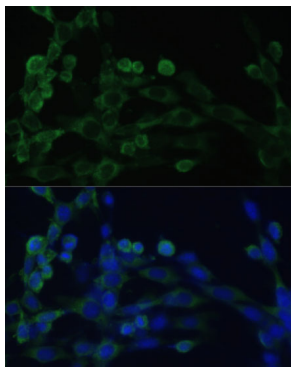
Immunohistochemistry analysis of paraffin-embedded Rat brain using [KO Validated] EEF1B2 Rabbit pAb (A6580) at dilution of 1:100 (40x lens). Microwave antigen retrieval performed with 0.01M PBS Buffer (pH 7.2) prior to IHC staining.



Immunohistochemistry analysis of paraffin-embedded Mouse brain using [KO Validated] EEF1B2 Rabbit pAb (A6580) at dilution of 1:100 (40x lens). Microwave antigen retrieval performed with 0.01M PBS Buffer (pH 7.2) prior to IHC staining.

## Validation Data

---



Immunofluorescence analysis of NIH/3T3 cells using [KO Validated] EEF1B2 Rabbit pAb (A6580) at dilution of 1:100. Secondary antibody: Cy3-conjugated Goat anti-Rabbit IgG (H+L) (AS007) at 1:500 dilution. Blue: DAPI for nuclear staining.