

A6566

Leader in Biomolecular Solutions for Life Science



CPSF3L Rabbit pAb

Catalog No.: A6566

1 Publications

Basic Information

Observed MW

68kDa

Calculated MW

68kDa

Category

Polyclonal Antibody

Applications

WB,IF/ICC,IP,ELISA

Cross-Reactivity

Human,Mouse,Rat

Background

The Integrator complex contains at least 12 subunits and associates with the C-terminal domain of RNA polymerase II large subunit (POLR2A; MIM 180660) and mediates the 3-prime end processing of small nuclear RNAs U1 (RNU1; MIM 180680) and U2 (RNU2; MIM 180690). INTS11, or CPSF3L, is the catalytic subunit of the Integrator complex (Baillat et al., 2005 [PubMed 16239144]).

Recommended Dilutions

WB 1:500 - 1:2000

IF/ICC 1:10 - 1:100

IP 0.5µg-4µg antibody for
200µg-400µg extracts
of whole cells

ELISA Recommended starting
concentration is 1
µg/mL. Please optimize
the concentration
based on your specific
assay requirements.

Immunogen Information

Gene ID

54973

Swiss Prot

Q5TA45

Immunogen

Recombinant fusion protein containing a sequence corresponding to amino acids 331-600 of human CPSF3L (NP_060341.2).

Synonyms

RC68; INT11; RC-68; CPSF3L; CPSF73L

Product Information

Source

Rabbit

Isotype

IgG

Purification

Affinity purification

Contact



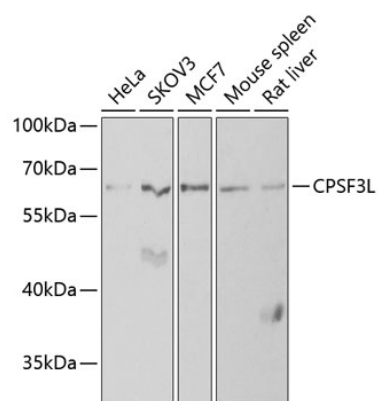
www.abclonal.com

Storage

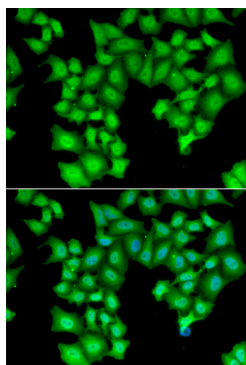
Store at -20°C. Avoid freeze / thaw cycles.

Buffer: PBS with 0.02% sodium azide, 50% glycerol, pH7.3.

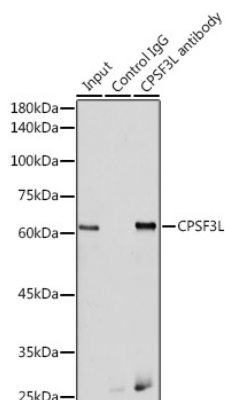
Validation Data



Western blot analysis of various lysates using CPSF3L Rabbit pAb (A6566) at 1:1000 dilution.
 Secondary antibody: HRP-conjugated Goat anti-Rabbit IgG (H+L) (AS014) at 1:10000 dilution.
 Lysates/proteins: 25µg per lane.
 Blocking buffer: 3% nonfat dry milk in TBST.
 Detection: ECL Basic Kit (RM00020).
 Exposure time: 90s.



Immunofluorescence analysis of HeLa cells using CPSF3L Rabbit pAb (A6566). Secondary antibody: Cy3-conjugated Goat anti-Rabbit IgG (H+L) (AS007) at 1:500 dilution. Blue: DAPI for nuclear staining.



Immunoprecipitation analysis of 300 µg extracts of HeLa cells using 3 µg CPSF3L antibody (A6566). Western blot was performed from the immunoprecipitate using CPSF3L antibody (A6566) at a dilution of 1:500.