

A6557

Leader in Biomolecular Solutions for Life Science



## CENPC Rabbit pAb

Catalog No.: A6557

### Basic Information

**Observed MW**

130kDa

**Calculated MW**

107kDa

**Category**

Polyclonal Antibody

**Applications**

WB, ELISA

**Cross-Reactivity**

Human, Mouse, Rat

### Background

Centromere protein C 1 is a centromere autoantigen and a component of the inner kinetochore plate. The protein is required for maintaining proper kinetochore size and a timely transition to anaphase. A putative pseudogene exists on chromosome 12.

### Recommended Dilutions

WB 1:500 - 1:2000

### Immunogen Information

**Gene ID**

1060

**Swiss Prot**

Q03188

**Immunogen**

Recombinant fusion protein containing a sequence corresponding to amino acids 1-300 of human CENPC (NP\_001803.2).

**Synonyms**

MIF2; hcp-4; CENP-C; CENPC1; CENPC

### Contact



[www.abclonal.com](http://www.abclonal.com)

### Product Information

**Source**

Rabbit

**Isotype**

IgG

**Purification**

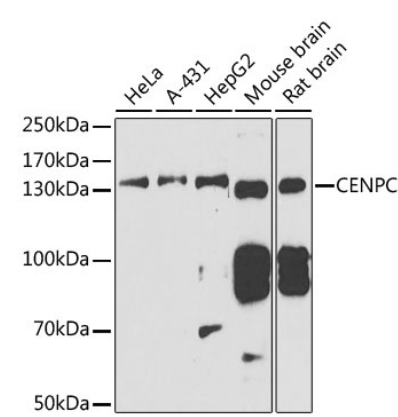
Affinity purification

**Storage**

Store at -20°C. Avoid freeze / thaw cycles.

Buffer: PBS with 0.02% sodium azide, 50% glycerol, pH 7.3.

Validation Data



Western blot analysis of extracts of various cell lines, using CENPC antibody (A6557) at 1:1000 dilution.  
Secondary antibody: HRP Goat Anti-Rabbit IgG (H+L) (AS014) at 1:10000 dilution.  
Lysates/proteins: 25µg per lane.  
Blocking buffer: 3% nonfat dry milk in TBST.  
Detection: ECL Basic Kit (RM00020).  
Exposure time: 90s.