

A6548

Leader in Biomolecular Solutions for Life Science



# CCT4 Rabbit pAb

Catalog No.: A6548 **2 Publications**

## Basic Information

### Observed MW

60kDa

### Calculated MW

58kDa

### Category

Polyclonal Antibody

### Applications

WB,IF/ICC,ELISA

### Cross-Reactivity

Human,Mouse,Rat

## Background

The chaperonin containing TCP1 (MIM 186980) complex (CCT), also called the TCP1 ring complex, consists of 2 back-to-back rings, each containing 8 unique but homologous subunits, such as CCT4. CCT assists the folding of newly translated polypeptide substrates through multiple rounds of ATP-driven release and rebinding of partially folded intermediate forms. Substrates of CCT include the cytoskeletal proteins actin (see MIM 102560) and tubulin (see MIM 191130), as well as alpha-transducin (MIM 139330) (Won et al., 1998 [PubMed 9819444]).

## Recommended Dilutions

WB	1:500 - 1:2000
IF/ICC	1:100 - 1:500

## Immunogen Information

<b>Gene ID</b>	<b>Swiss Prot</b>
10575	P50991

### Immunogen

Recombinant fusion protein containing a sequence corresponding to amino acids 130-390 of human CCT4 (NP\_006421.2).

### Synonyms

SRB; Cctd; CCT-DELTA; CCT4

## Contact

 [www.abclonal.com](http://www.abclonal.com)

## Product Information

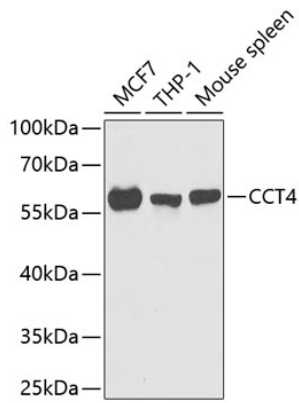
<b>Source</b>	<b>Isotype</b>	<b>Purification</b>
Rabbit	IgG	Affinity purification

### Storage

Store at -20°C. Avoid freeze / thaw cycles.  
Buffer: PBS with 0.02% sodium azide,50% glycerol,pH7.3.

## Validation Data

---



Western blot analysis of extracts of various cell lines, using CCT4 antibody (A6548) at 1:1000 dilution.

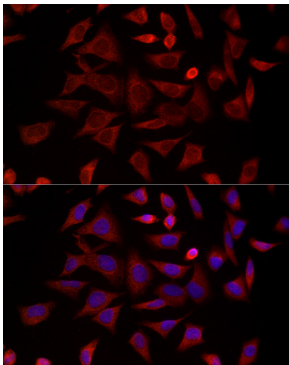
Secondary antibody: HRP Goat Anti-Rabbit IgG (H+L) (AS014) at 1:10000 dilution.

Lysates/proteins: 25µg per lane.

Blocking buffer: 3% nonfat dry milk in TBST.

Detection: ECL Basic Kit (RM00020).

Exposure time: 90s.



Immunofluorescence analysis of HeLa cells using CCT4 Rabbit pAb (A6548) at dilution of 1:300 (40x lens). Blue: DAPI for nuclear staining.