

A6534

Leader in Biomolecular Solutions for Life Science



## BHLHE40 Rabbit pAb

Catalog No.: A6534 **2 Publications**

### Basic Information

#### Observed MW

48kDa

#### Calculated MW

46kDa

#### Category

Polyclonal Antibody

#### Applications

WB,IHC-P,ELISA

#### Cross-Reactivity

Human,Mouse,Rat

### Background

This gene encodes a basic helix-loop-helix protein expressed in various tissues. The encoded protein can interact with ARNTL or compete for E-box binding sites in the promoter of PER1 and repress CLOCK/ARNTL's transactivation of PER1. This gene is believed to be involved in the control of circadian rhythm and cell differentiation.

### Recommended Dilutions

**WB** 1:500 - 1:2000

**IHC-P** 1:50 - 1:200

**ELISA** Recommended starting concentration is 1 µg/mL. Please optimize the concentration based on your specific assay requirements.

### Immunogen Information

#### Gene ID

8553

#### Swiss Prot

O14503

#### Immunogen

Recombinant fusion protein containing a sequence corresponding to amino acids 121-300 of human BHLHE40 (NP\_003661.1).

#### Synonyms

DEC1; HLHB2; BHLHB2; Clast5; SHARP2; STRA13; Stra14; SHARP-2; BHLHE40

### Contact

 [www.abclonal.com](http://www.abclonal.com)

### Product Information

#### Source

Rabbit

#### Isotype

IgG

#### Purification

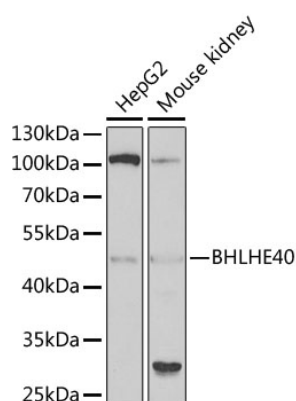
Affinity purification

#### Storage

Store at -20°C. Avoid freeze / thaw cycles.

Buffer: PBS with 0.02% sodium azide, 50% glycerol, pH7.3.

## Validation Data



Western blot analysis of various lysates using BHLHE40 Rabbit pAb (A6534) at 1:1000 dilution.

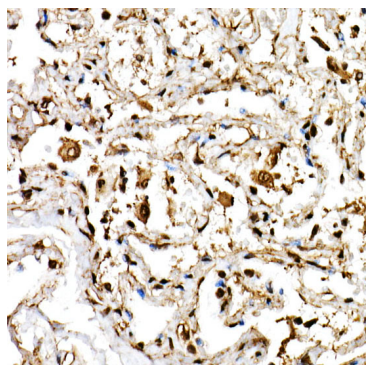
Secondary antibody: HRP-conjugated Goat anti-Rabbit IgG (H+L) (AS014) at 1:10000 dilution.

Lysates/proteins: 25µg per lane.

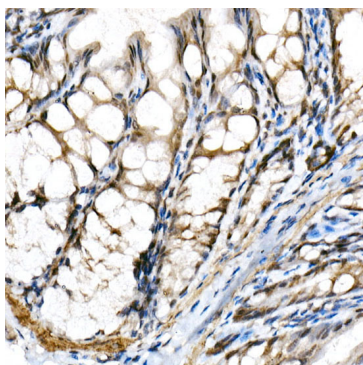
Blocking buffer: 3% nonfat dry milk in TBST.

Detection: ECL Basic Kit (RM00020).

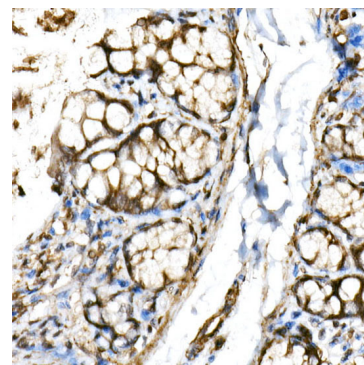
Exposure time: 90s.



Immunohistochemistry analysis of paraffin-embedded Human lung using BHLHE40 Rabbit pAb (A6534) at dilution of 1:100 (40x lens). High pressure antigen retrieval performed with 0.01M Citrate Buffer (pH 6.0) prior to IHC staining.



Immunohistochemistry analysis of paraffin-embedded Mouse colon using BHLHE40 Rabbit pAb (A6534) at dilution of 1:100 (40x lens). High pressure antigen retrieval performed with 0.01M Citrate Buffer (pH 6.0) prior to IHC staining.



Immunohistochemistry analysis of paraffin-embedded Rat colon using BHLHE40 Rabbit pAb (A6534) at dilution of 1:100 (40x lens). High pressure antigen retrieval performed with 0.01M Citrate Buffer (pH 6.0) prior to IHC staining.