

A6517

Leader in Biomolecular Solutions for Life Science



AGPAT1 Rabbit pAb

Catalog No.: A6517 **1 Publications**

Basic Information

Observed MW

32kDa

Calculated MW

32kDa

Category

Polyclonal Antibody

Applications

WB,IP,ELISA

Cross-Reactivity

Human,Mouse,Rat

Background

This gene encodes an enzyme that converts lysophosphatidic acid (LPA) into phosphatidic acid (PA). LPA and PA are two phospholipids involved in signal transduction and in lipid biosynthesis in cells. This enzyme localizes to the endoplasmic reticulum. This gene is located in the class III region of the human major histocompatibility complex. Alternative splicing results in two transcript variants encoding the same protein.

Recommended Dilutions

WB 1:500 - 1:2000

IP 0.5µg-4µg antibody for
200µg-400µg extracts
of whole cells

ELISA Recommended starting
concentration is 1
µg/mL. Please optimize
the concentration
based on your specific
assay requirements.

Contact

 www.abclonal.com

Immunogen Information

Gene ID

10554

Swiss Prot

Q99943

Immunogen

Recombinant protein (or fragment). This information is considered to be commercially sensitive.

Synonyms

G15; LPAATA; LPLAT1; 1-AGPAT1; LPAAT-alpha; AGPAT1

Product Information

Source

Rabbit

Isotype

IgG

Purification

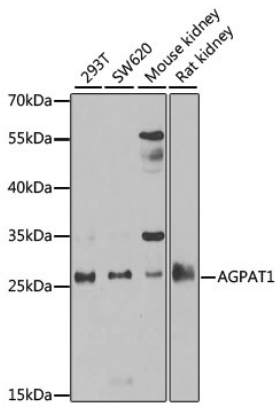
Affinity purification

Storage

Store at -20°C. Avoid freeze / thaw cycles.

Buffer: PBS containing 50% glycerol, preserved with proclin300 or sodium azide (as specified on the Certificate of Analysis), pH 7.3.

Validation Data



Western blot analysis of various lysates using AGPAT1 Rabbit pAb (A6517) at 1:1000 dilution.

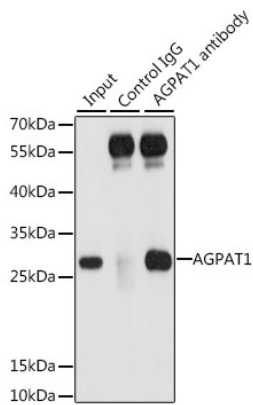
Secondary antibody: HRP-conjugated Goat anti-Rabbit IgG (H+L) (AS014) at 1:10000 dilution.

Lysates/proteins: 25µg per lane.

Blocking buffer: 3% nonfat dry milk in TBST.

Detection: ECL Basic Kit (RM00020).

Exposure time: 90s.



Immunoprecipitation analysis of 200 µg extracts of 293T cells, using 3 µg AGPAT1 antibody (A6517). Western blot was performed from the immunoprecipitate using AGPAT1 antibody (A6517) at a dilution of 1:1000.