

A6434

Leader in Biomolecular Solutions for Life Science



# SLC5A6 Rabbit pAb

Catalog No.: A6434

## Basic Information

### Observed MW

71kDa

### Calculated MW

69kDa

### Category

Polyclonal Antibody

### Applications

WB,ELISA

### Cross-Reactivity

Human

## Background

Enables biotin transmembrane transporter activity and pantothenate transmembrane transporter activity. Involved in anion transmembrane transport and transport across blood-brain barrier. Located in plasma membrane.

## Recommended Dilutions

**WB** 1:500 - 1:2000

**ELISA** Recommended starting concentration is 1 µg/mL. Please optimize the concentration based on your specific assay requirements.

## Immunogen Information

**Gene ID**  
8884

**Swiss Prot**  
Q9Y289

### Immunogen

Synthetic peptide. This information is considered to be commercially sensitive.

### Synonyms

SMVT; COMNB; NERIB; SMVTD; SLC5A6

## Contact

 [www.abclonal.com](http://www.abclonal.com)

## Product Information

**Source**  
Rabbit

**Isotype**  
IgG

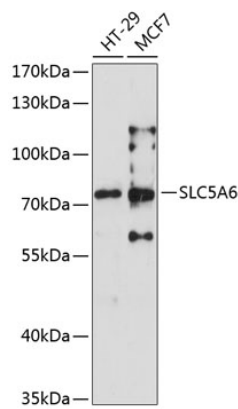
**Purification**  
Affinity purification

### Storage

Store at -20°C. Avoid freeze / thaw cycles.

Buffer: PBS with 0.01% thimerosal, 50% glycerol, pH7.3.

Validation Data



Western blot analysis of various lysates using SLC5A6 Rabbit pAb (A6434) at 1:3000 dilution. Secondary antibody: HRP-conjugated Goat anti-Rabbit IgG (H+L) (AS014) at 1:10000 dilution. Lysates/proteins: 25µg per lane. Blocking buffer: 3% nonfat dry milk in TBST. Detection: ECL Enhanced Kit (RM00021). Exposure time: 90s.