

A6353

Leader in Biomolecular Solutions for Life Science



# Placental alkaline phosphatase (PLAP) Rabbit pAb

Catalog No.: A6353

1 Publications

## Basic Information

### Observed MW

70kDa

### Calculated MW

58kDa

### Category

Polyclonal Antibody

### Applications

WB,IHC-P,IP,ELISA

### Cross-Reactivity

Human

## Background

The protein encoded by this gene is an alkaline phosphatase, a metalloenzyme that catalyzes the hydrolysis of phosphoric acid monoesters. It belongs to a multigene family composed of four alkaline phosphatase isoenzymes. The enzyme functions as a homodimer and has a catalytic site containing one magnesium and two zinc ions, which are required for its enzymatic function. One of the main sources of this enzyme is the liver, and thus, it's one of several indicators of liver injury in different clinical conditions. In pregnant women, this protein is primarily expressed in placental and endometrial tissue, however, strong ectopic expression has been detected in ovarian adenocarcinoma, serous cystadenocarcinoma, and other ovarian cancer cells.

## Recommended Dilutions

WB 1:500 - 1:2000

IHC-P 1:50 - 1:200

IP 1:50 - 1:100

ELISA Recommended starting concentration is 1 µg/mL. Please optimize the concentration based on your specific assay requirements.

## Immunogen Information

### Gene ID

250

### Swiss Prot

P05187

### Immunogen

Recombinant fusion protein containing a sequence corresponding to amino acids 260-460 of human Placental alkaline phosphatase (PLAP) (NP\_001623.3).

### Synonyms

ALP; IAP; ALPI; PALP; PLAP; PLAP-1; Placental alkaline phosphatase (PLAP)

## Product Information

### Source

Rabbit

### Isotype

IgG

### Purification

Affinity purification

### Storage

Store at -20°C. Avoid freeze / thaw cycles.

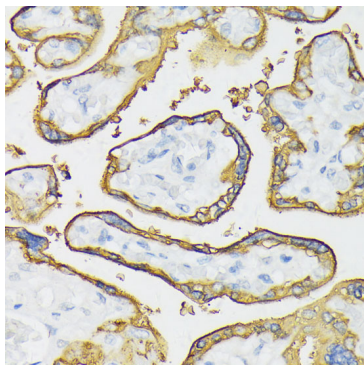
Buffer: PBS with 0.02% sodium azide, 50% glycerol, pH7.3.

## Contact

[www.abclonal.com](http://www.abclonal.com)

## Validation Data

---



Immunohistochemistry analysis of paraffin-embedded Human placenta using Placental alkaline phosphatase (PLAP) Rabbit pAb (A6353) at dilution of 1:100 (40x lens). Microwave antigen retrieval performed with 0.01M PBS Buffer (pH 7.2) prior to IHC staining.