

A6339

Leader in Biomolecular Solutions for Life Science



# INTS4 Rabbit pAb

Catalog No.: A6339

## Basic Information

### Observed MW

108kDa

### Calculated MW

108kDa

### Category

Polyclonal Antibody

### Applications

WB,IP,ELISA

### Cross-Reactivity

Human,Mouse,Rat

## Background

INTS4 is a subunit of the Integrator complex, which associates with the C-terminal domain of RNA polymerase II large subunit (POLR2A; MIM 180660) and mediates 3-prime end processing of small nuclear RNAs U1 (RNU1; MIM 180680) and U2 (RNU2; MIM 180690) (Baillat et al., 2005 [PubMed 16239144]).

## Recommended Dilutions

**WB** 1:500 - 1:1000

**IP** 0.5µg-4µg antibody for  
200µg-400µg extracts  
of whole cells

**ELISA** Recommended starting  
concentration is 1  
µg/mL. Please optimize  
the concentration  
based on your specific  
assay requirements.

## Immunogen Information

### Gene ID

92105

### Swiss Prot

Q96HW7

### Immunogen

Recombinant fusion protein containing a sequence corresponding to amino acids 1-270 of human INTS4 (NP\_291025.3).

### Synonyms

INT4; MST093; INTS4

## Product Information

### Source

Rabbit

### Isotype

IgG

### Purification

Affinity purification

### Storage

Store at -20°C. Avoid freeze / thaw cycles.

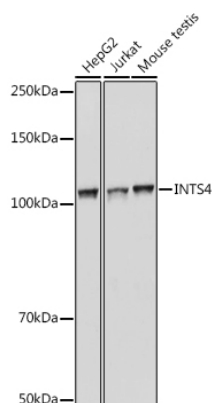
Buffer: PBS with 0.02% sodium azide,50% glycerol,pH7.3.

## Contact

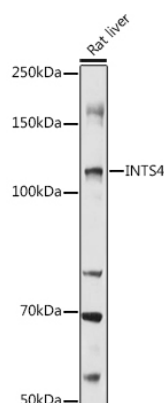


[www.abclonal.com](http://www.abclonal.com)

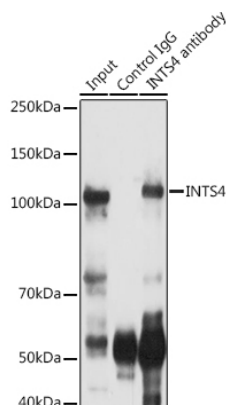
## Validation Data



Western blot analysis of various lysates using INTS4 Rabbit pAb (A6339) at 1:1000 dilution.  
Secondary antibody: HRP-conjugated Goat anti-Rabbit IgG (H+L) (AS014) at 1:10000 dilution.  
Lysates/proteins: 25µg per lane.  
Blocking buffer: 3% nonfat dry milk in TBST.  
Detection: ECL Basic Kit (RM00020).  
Exposure time: 1s.



Western blot analysis of lysates from Rat liver, using INTS4 Rabbit pAb (A6339) at 1:1000 dilution.  
Secondary antibody: HRP-conjugated Goat anti-Rabbit IgG (H+L) (AS014) at 1:10000 dilution.  
Lysates/proteins: 25µg per lane.  
Blocking buffer: 3% nonfat dry milk in TBST.  
Detection: ECL Basic Kit (RM00020).  
Exposure time: 30s.



Immunoprecipitation analysis of 300 µg extracts of Jurkat cells using 3 µg INTS4 antibody (A6339). Western blot was performed from the immunoprecipitate using INTS4 antibody (A6339) at a dilution of 1:500.