

A6232

Leader in Biomolecular Solutions for Life Science



# KCNJ5 Rabbit pAb

Catalog No.: A6232

## Basic Information

---

### Observed MW

47kDa

### Calculated MW

48kDa

### Category

Polyclonal Antibody

### Applications

WB,ELISA

### Cross-Reactivity

Human,Mouse,Rat

## Background

---

This gene encodes an integral membrane protein which belongs to one of seven subfamilies of inward-rectifier potassium channel proteins called potassium channel subfamily J. The encoded protein is a subunit of the potassium channel which is homotetrameric. It is controlled by G-proteins and has a greater tendency to allow potassium to flow into a cell rather than out of a cell. Naturally occurring mutations in this gene are associated with aldosterone-producing adenomas.

## Recommended Dilutions

---

**WB** 1:500 - 1:2000

**ELISA** Recommended starting concentration is 1 µg/mL. Please optimize the concentration based on your specific assay requirements.

## Immunogen Information

---

### Gene ID

3762

### Swiss Prot

P48544

### Immunogen

Synthetic peptide. This information is considered to be commercially sensitive.

### Synonyms

CIR; GIRK4; KATP1; LQT13; KIR3.4; KCNJ5

## Contact

---

 [www.abclonal.com](http://www.abclonal.com)

## Product Information

---

### Source

Rabbit

### Isotype

IgG

### Purification

Affinity purification

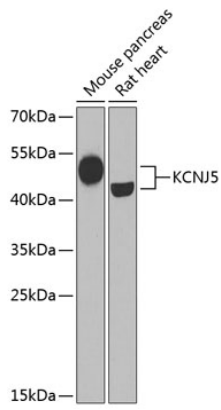
### Storage

Store at -20°C. Avoid freeze / thaw cycles.

Buffer: PBS containing 50% glycerol, preserved with proclin300 or sodium azide (as specified on the Certificate of Analysis), pH 7.3.

## Validation Data

---



Western blot analysis of various lysates using KCNJ5 Rabbit pAb (A6232) at 1:1000 dilution.

Secondary antibody: HRP-conjugated Goat anti-Rabbit IgG (H+L) (AS014) at 1:10000 dilution.

Lysates/proteins: 25 $\mu$ g per lane.

Blocking buffer: 3% nonfat dry milk in TBST.

Detection: ECL Basic Kit (RM00020).

Exposure time: 30s.