

A6221

Leader in Biomolecular Solutions for Life Science



CBX4 Rabbit pAb

Catalog No.: A6221

1 Publications

Basic Information

Observed MW

85kDa

Calculated MW

61kDa

Category

Polyclonal Antibody

Applications

WB,ELISA

Cross-Reactivity

Human,Mouse

Background

Enables SUMO binding activity; SUMO ligase activity; and enzyme binding activity. Involved in negative regulation of transcription by RNA polymerase II. Located in nuclear body. Part of PRC1 complex. Implicated in hepatocellular carcinoma. Biomarker of hepatocellular carcinoma.

Recommended Dilutions

WB 1:500 - 1:1000

ELISA Recommended starting concentration is 1 µg/mL. Please optimize the concentration based on your specific assay requirements.

Immunogen Information

Gene ID

8535

Swiss Prot

O00257

Immunogen

Recombinant protein (or fragment). This information is considered to be commercially sensitive.

Synonyms

PC2; NBP16; CBX4

Contact



www.abclonal.com

Product Information

Source

Rabbit

Isotype

IgG

Purification

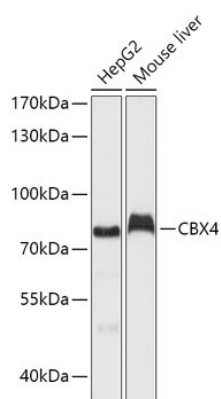
Affinity purification

Storage

Store at -20°C. Avoid freeze / thaw cycles.

Buffer: PBS with 0.02% sodium azide, 50% glycerol, pH7.3.

Validation Data



Western blot analysis of various lysates using CBX4 Rabbit pAb (A6221) at 1:1000 dilution.

Secondary antibody: HRP-conjugated Goat anti-Rabbit IgG (H+L) (AS014) at 1:10000 dilution.

Lysates/proteins: 25µg per lane.

Blocking buffer: 3% nonfat dry milk in TBST.

Detection: ECL Basic Kit (RM00020).

Exposure time: 60s.