

A6145

Leader in Biomolecular Solutions for Life Science



[KO Validated] SETDB1 Rabbit pAb

Catalog No.: A6145

KO Validated

2 Publications

Basic Information

Observed MW

180kDa

Calculated MW

143kDa

Category

Polyclonal Antibody

Applications

WB, ELISA, IF-P

Cross-Reactivity

Human, Mouse, Rat

Background

This gene encodes a histone methyltransferase which regulates histone methylation, gene silencing, and transcriptional repression. This gene has been identified as a target for treatment in Huntington Disease, given that gene silencing and transcription dysfunction likely play a role in the disease pathogenesis. Alternatively spliced transcript variants of this gene have been described.

Recommended Dilutions

WB 1:500 - 1:1000

IF-P 1:100-1:300

ELISA Recommended starting concentration is 1 µg/mL. Please optimize the concentration based on your specific assay requirements.

Immunogen Information

Gene ID

9869

Swiss Prot

Q15047

Immunogen

Recombinant protein (or fragment). This information is considered to be commercially sensitive.

Synonyms

ESET; KG1T; KMT1E; TDRD21; H3-K9-HMTase4; B1

Contact

 www.abclonal.com

Product Information

Source

Rabbit

Isotype

IgG

Purification

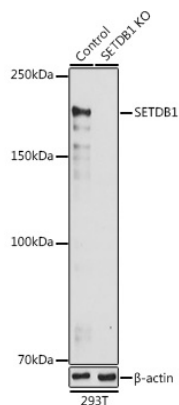
Affinity purification

Storage

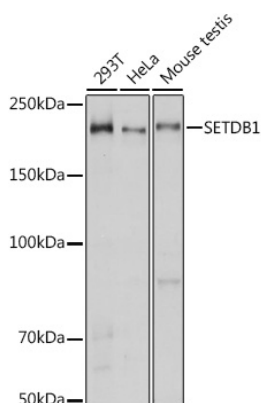
Store at -20°C. Avoid freeze / thaw cycles.

Buffer: PBS containing 50% glycerol, preserved with proclin300 or sodium azide (as specified on the Certificate of Analysis), pH 7.3.

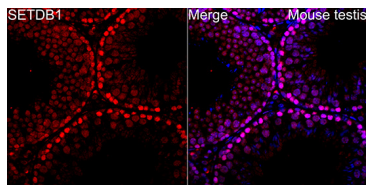
Validation Data



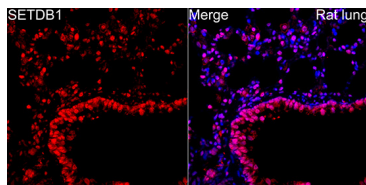
Western blot analysis of lysates from wild type (WT) and SETDB1 knockout (KO) 293T cells, using [KO Validated] SETDB1 Rabbit pAb (A6145) at 1:1000 dilution. Secondary antibody: HRP-conjugated Goat anti-Rabbit IgG (H+L) (AS014) at 1:10000 dilution. Lysates/proteins: 25µg per lane. Blocking buffer: 3% nonfat dry milk in TBST. Detection: ECL Basic Kit (RM00020). Exposure time: 30s.



Western blot analysis of various lysates using [KO Validated] SETDB1 Rabbit pAb (A6145) at 1:1000 dilution. Secondary antibody: HRP-conjugated Goat anti-Rabbit IgG (H+L) (AS014) at 1:10000 dilution. Lysates/proteins: 25µg per lane. Blocking buffer: 3% nonfat dry milk in TBST. Detection: ECL Basic Kit (RM00020). Exposure time: 3s.



Immunofluorescence analysis of Mouse testis tissue using [KO Validated] SETDB1 Rabbit pAb (A6145) at a dilution of 1:200 (40x lens). Secondary antibody: Cy3-conjugated Goat anti-Rabbit IgG (H+L)(AS007) at 1:500 dilution. Blue: DAPI for nuclear staining. High pressure antigen retrieval performed with 0.01M Citrate Buffer (pH 6.0) prior to IF staining.



Immunofluorescence analysis of Rat lung tissue using [KO Validated] SETDB1 Rabbit pAb (A6145) at a dilution of 1:200 (40x lens). Secondary antibody: Cy3-conjugated Goat anti-Rabbit IgG (H+L)(AS007) at 1:500 dilution. Blue: DAPI for nuclear staining. High pressure antigen retrieval performed with prior to IF staining.