

A6115

Leader in Biomolecular Solutions for Life Science



TNRC6A Rabbit pAb

Catalog No.: A6115 **1 Publications**

Basic Information

Observed MW

180kDa

Calculated MW

210kDa

Category

Polyclonal Antibody

Applications

WB,IF/ICC,ELISA

Cross-Reactivity

Human,Mouse,Rat

Background

This gene encodes a member of the trinucleotide repeat containing 6 protein family. The protein functions in post-transcriptional gene silencing through the RNA interference (RNAi) and microRNA pathways. The protein associates with messenger RNAs and Argonaute proteins in cytoplasmic bodies known as GW-bodies or P-bodies. Inhibiting expression of this gene delocalizes other GW-body proteins and impairs RNAi and microRNA-induced gene silencing.

Recommended Dilutions

WB 1:500 - 1:1000

IF/ICC 1:50 - 1:100

Immunogen Information

Gene ID

27327

Swiss Prot

Q8NDV7

Immunogen

A synthetic peptide corresponding to a sequence within amino acids 950-1050 of human TNRC6A (NP_055309.2).

Synonyms

GW1; FAME6; GW182; TNRC6; CAGH26; TNRC6A

Contact



www.abclonal.com

Product Information

Source

Rabbit

Isotype

IgG

Purification

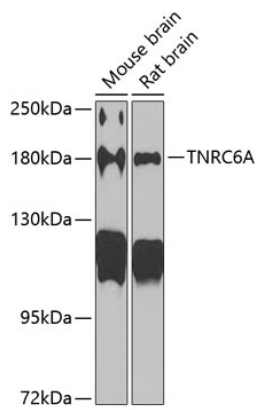
Affinity purification

Storage

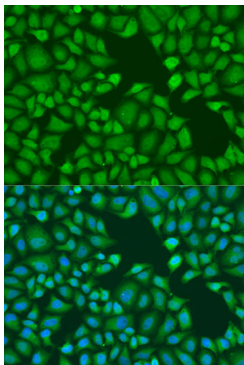
Store at -20°C. Avoid freeze / thaw cycles.

Buffer: PBS with 0.02% sodium azide,50% glycerol,pH7.3.

Validation Data



Western blot analysis of extracts of various cell lines, using TNRC6A antibody (A6115) at 1:1000 dilution.
Secondary antibody: HRP Goat Anti-Rabbit IgG (H+L) (AS014) at 1:10000 dilution.
Lysates/proteins: 25µg per lane.
Blocking buffer: 3% nonfat dry milk in TBST.
Detection: ECL Basic Kit (RM00020).
Exposure time: 90s.



Immunofluorescence analysis of U2OS cells using TNRC6A antibody (A6115) at dilution of 1:100. Blue: DAPI for nuclear staining.