

A6070

Leader in Biomolecular Solutions for Life Science



# SFRS9 Rabbit pAb

Catalog No.: A6070

## Basic Information

---

### Observed MW

26kDa

### Calculated MW

26kDa

### Category

Polyclonal Antibody

### Applications

WB,ELISA

### Cross-Reactivity

Human,Mouse

## Background

---

The protein encoded by this gene is a member of the serine/arginine (SR)-rich family of pre-mRNA splicing factors, which constitute part of the spliceosome. Each of these factors contains an RNA recognition motif (RRM) for binding RNA and an RS domain for binding other proteins. The RS domain is rich in serine and arginine residues and facilitates interaction between different SR splicing factors. In addition to being critical for mRNA splicing, the SR proteins have also been shown to be involved in mRNA export from the nucleus and in translation. Two pseudogenes, one on chromosome 15 and the other on chromosome 21, have been found for this gene.

## Recommended Dilutions

---

WB 1:500 - 1:1000

## Immunogen Information

---

### Gene ID

8683

### Swiss Prot

Q13242

### Immunogen

Recombinant fusion protein containing a sequence corresponding to amino acids 1-221 of human SFRS9 (NP\_003760.1).

### Synonyms

SFRS9; SRp30c

## Contact

---

 [www.abclonal.com](http://www.abclonal.com)

## Product Information

---

### Source

Rabbit

### Isotype

IgG

### Purification

Affinity purification

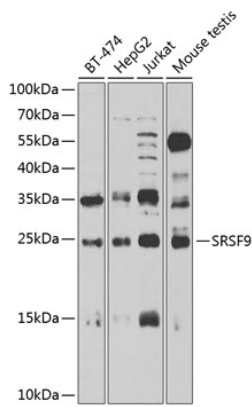
### Storage

Store at -20°C. Avoid freeze / thaw cycles.

Buffer: PBS with 0.02% sodium azide,50% glycerol,pH7.3.

## Validation Data

---



Western blot analysis of various lysates using SFRS9 Rabbit pAb (A6070) at 1:1000 dilution.

Secondary antibody: HRP-conjugated Goat anti-Rabbit IgG (H+L) (AS014) at 1:10000 dilution.

Lysates/proteins: 25µg per lane.

Blocking buffer: 3% nonfat dry milk in TBST.

Detection: ECL Enhanced Kit (RM00021).

Exposure time: 10s.