

A5974

Leader in Biomolecular Solutions for Life Science



# ERAL1 Rabbit pAb

Catalog No.: A5974

## Basic Information

---

### Observed MW

46kDa

### Calculated MW

48kDa

### Category

Polyclonal Antibody

### Applications

WB

### Cross-Reactivity

Human

## Background

---

The protein encoded by this gene is a GTPase that localizes to the mitochondrion. The encoded protein binds to the 3' terminal stem loop of 12S mitochondrial rRNA and is required for proper assembly of the 28S small mitochondrial ribosomal subunit. Deletion of this gene has been shown to cause mitochondrial dysfunction, growth retardation, and apoptosis. Several transcript variants encoding different isoforms have been found for this gene.

## Recommended Dilutions

---

WB 1:1000 - 1:2000

## Immunogen Information

---

### Gene ID

26284

### Swiss Prot

O75616

### Immunogen

Synthetic peptide. This information is considered to be commercially sensitive.

### Synonyms

ERA; CEGA; ERA-W; H-ERA; ERAL1A; ERAL1B; HERA-A; HERA-B; PRLTS6; ERAL1

## Contact

---

 [www.abclonal.com](http://www.abclonal.com)

## Product Information

---

### Source

Rabbit

### Isotype

IgG

### Purification

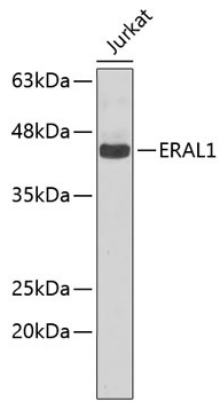
Affinity purification

### Storage

Store at 4°C. Avoid freeze / thaw cycles.  
Buffer: PBS with 0.02% sodium azide, pH7.3.

## Validation Data

---



Western blot analysis of lysates from Jurkat cells, using ERAL1 Rabbit pAb (A5974).  
Secondary antibody: HRP-conjugated Goat anti-Rabbit IgG (H+L) (AS014) at 1:10000 dilution.

Lysates/proteins: 25µg per lane.

Blocking buffer: 3% nonfat dry milk in TBST.