

A5943

Leader in Biomolecular Solutions for Life Science



AKAP1 Rabbit pAb

Catalog No.: A5943

1 Publications

Basic Information

Observed MW

135kDa

Calculated MW

97kDa

Category

Polyclonal Antibody

Applications

WB,IF/ICC,IP,FC,ELISA

Cross-Reactivity

Human

Background

The A-kinase anchor proteins (AKAPs) are a group of structurally diverse proteins, which have the common function of binding to the regulatory subunit of protein kinase A (PKA) and confining the holoenzyme to discrete locations within the cell. This gene encodes a member of the AKAP family. The encoded protein binds to type I and type II regulatory subunits of PKA and anchors them to the mitochondrion. This protein is speculated to be involved in the cAMP-dependent signal transduction pathway and in directing RNA to a specific cellular compartment.

Recommended Dilutions

WB	1:500 - 1:2000
IF/ICC	1:50 - 1:100
IP	1:20 - 1:50
FC	1:20 - 1:50

Immunogen Information

Gene ID

8165

Swiss Prot

Q92667

Immunogen

Recombinant fusion protein containing a sequence corresponding to amino acids 30-280 of human AKAP1 (NP_003479.1).

Synonyms

AKAP; PRKA1; AKAP84; TDRD17; AKAP121; AKAP149; D-AKAP1; PPP1R43; SAKAP84; AKAP1

Contact

 www.abclonal.com

Product Information

Source

Rabbit

Isotype

IgG

Purification

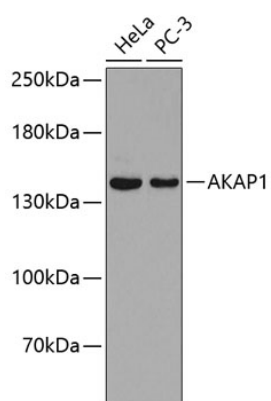
Affinity purification

Storage

Store at -20°C. Avoid freeze / thaw cycles.

Buffer: PBS with 0.01% thimerosal, 50% glycerol, pH7.3.

Validation Data



Western blot analysis of extracts of various cell lines, using AKAP1 antibody (A5943).
Secondary antibody: HRP Goat Anti-Rabbit IgG (H+L) (AS014) at 1:10000 dilution.
Lysates/proteins: 25µg per lane.
Blocking buffer: 3% nonfat dry milk in TBST.