

A5920

Leader in Biomolecular Solutions for Life Science



## ETF1 Rabbit pAb

Catalog No.: A5920

### Basic Information

#### Observed MW

55kDa

#### Calculated MW

49kDa

#### Category

Polyclonal Antibody

#### Applications

WB,IF/ICC,ELISA

#### Cross-Reactivity

Human,Mouse,Rat

### Background

This gene encodes a class-1 polypeptide chain release factor. The encoded protein plays an essential role in directing termination of mRNA translation from the termination codons UAA, UAG and UGA. This protein is a component of the SURF complex which promotes degradation of prematurely terminated mRNAs via the mechanism of nonsense-mediated mRNA decay (NMD). Alternate splicing results in multiple transcript variants. Pseudogenes of this gene are found on chromosomes 6, 7, and X.

### Recommended Dilutions

WB 1:200 - 1:2000

IF/ICC 1:50 - 1:200

### Immunogen Information

#### Gene ID

2107

#### Swiss Prot

P62495

#### Immunogen

Recombinant fusion protein containing a sequence corresponding to amino acids 278-437 of human ETF1 (NP\_004721.1).

#### Synonyms

ERF; RF1; ERF1; TB3-1; D5S1995; SUP45L1; ETF1

### Contact



[www.abclonal.com](http://www.abclonal.com)

### Product Information

#### Source

Rabbit

#### Isotype

IgG

#### Purification

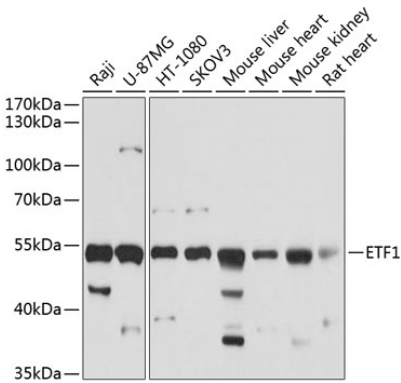
Affinity purification

#### Storage

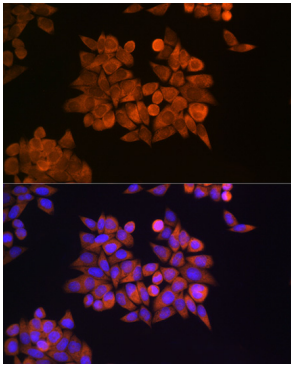
Store at -20°C. Avoid freeze / thaw cycles.

Buffer: PBS with 0.02% sodium azide, 50% glycerol, pH7.3.

Validation Data



Western blot analysis of extracts of various cell lines, using ETF1 antibody (A5920) at 1:1000 dilution.  
Secondary antibody: HRP Goat Anti-Rabbit IgG (H+L) (AS014) at 1:10000 dilution.  
Lysates/proteins: 25µg per lane.  
Blocking buffer: 3% nonfat dry milk in TBST.  
Detection: ECL Basic Kit (RM00020).  
Exposure time: 3s.



Immunofluorescence analysis of HeLa cells using ETF1 Rabbit pAb (A5920) at dilution of 1:100 (40x lens). Blue: DAPI for nuclear staining.