

A5887

Leader in Biomolecular Solutions for Life Science



MTDH Rabbit pAb

Catalog No.: A5887 **2 Publications**

Basic Information

Observed MW

75kDa/80kDa

Calculated MW

64kDa

Category

Polyclonal Antibody

Applications

WB,IHC-P,IF/ICC,ELISA

Cross-Reactivity

Human,Mouse,Rat

Background

Enables NF-kappaB binding activity; double-stranded RNA binding activity; and transcription coactivator activity. Involved in several processes, including lipopolysaccharide-mediated signaling pathway; positive regulation of intracellular signal transduction; and regulation of transcription, DNA-templated. Located in endoplasmic reticulum; nuclear lumen; and perinuclear region of cytoplasm. Implicated in hepatocellular carcinoma.

Recommended Dilutions

WB 1:500 - 1:1000

IHC-P 1:50 - 1:200

IF/ICC 1:50 - 1:200

Immunogen Information

Gene ID

92140

Swiss Prot

Q86UE4

Immunogen

Recombinant fusion protein containing a sequence corresponding to amino acids 1-260 of human MTDH (NP_848927.2).

Synonyms

3D3; AEG1; AEG-1; LYRIC; LYRIC/3D3; MTDH

Contact

 www.abclonal.com

Product Information

Source

Rabbit

Isotype

IgG

Purification

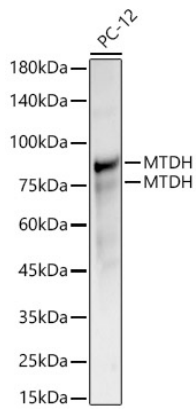
Affinity purification

Storage

Store at -20°C. Avoid freeze / thaw cycles.

Buffer: PBS with 0.05% proclin300,50% glycerol,pH7.3.

Validation Data



Western blot analysis of lysates from PC-12 cells, using MTDH Rabbit pAb (A5887) at 1:1000 dilution.

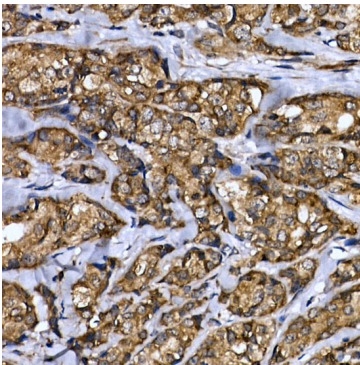
Secondary antibody: HRP Goat Anti-Rabbit IgG (H+L) (AS014) at 1:10000 dilution.

Lysates/proteins: 25µg per lane.

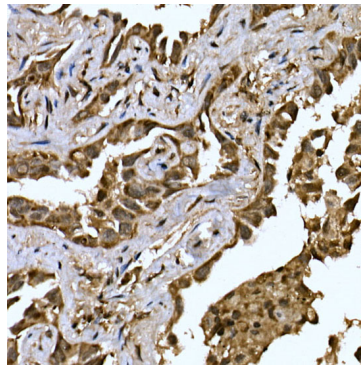
Blocking buffer: 3% nonfat dry milk in TBST.

Detection: ECL Basic Kit (RM00020).

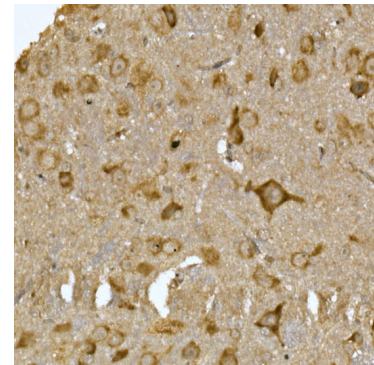
Exposure time: 7s.



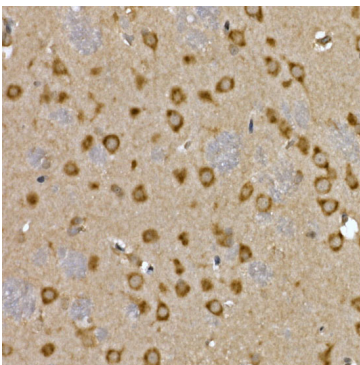
Immunohistochemistry analysis of paraffin-embedded Human breast cancer using MTDH Rabbit pAb (A5887) at dilution of 1:200 (40x lens). Perform high pressure antigen retrieval with 10 mM citrate buffer pH 6.0 before commencing with IHC staining protocol.



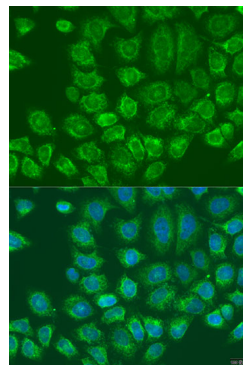
Immunohistochemistry analysis of paraffin-embedded Human lung cancer using MTDH Rabbit pAb (A5887) at dilution of 1:200 (40x lens). Perform high pressure antigen retrieval with 10 mM citrate buffer pH 6.0 before commencing with IHC staining protocol.



Immunohistochemistry analysis of paraffin-embedded Mouse spinal cord using MTDH Rabbit pAb (A5887) at dilution of 1:200 (40x lens). Perform high pressure antigen retrieval with 10 mM citrate buffer pH 6.0 before commencing with IHC staining protocol.



Immunohistochemistry analysis of paraffin-embedded Rat brain using MTDH Rabbit pAb (A5887) at dilution of 1:200 (40x lens). Perform high pressure antigen retrieval with 10 mM citrate buffer pH 6.0 before commencing with IHC staining protocol.



Immunofluorescence analysis of U2OS cells using MTDH Rabbit pAb (A5887) at dilution of 1:100. Secondary antibody: Cy3 Goat Anti-Rabbit IgG (H+L) (AS007) at 1:500 dilution. Blue: DAPI for nuclear staining.