

A5843

Leader in Biomolecular Solutions for Life Science



PHC1 Rabbit pAb

Catalog No.: A5843

Basic Information

Observed MW

125kDa/135kDa

Calculated MW

106kDa

Category

Polyclonal Antibody

Applications

WB,ELISA

Cross-Reactivity

Human,Mouse,Rat

Background

This gene is a homolog of the Drosophila polyhomeotic gene, which is a member of the Polycomb group of genes. The gene product is a component of a multimeric protein complex that contains EDR2 and the vertebrate Polycomb protein BMH1. The gene product, the EDR2 protein, and the Drosophila polyhomeotic protein share 2 highly conserved domains, named homology domains I and II. These domains are involved in protein-protein interactions and may mediate heterodimerization of the protein encoded by this gene and the EDR2 protein.

Recommended Dilutions

WB 1:500 - 1:2000

Immunogen Information

Gene ID

1911

Swiss Prot

P78364

Immunogen

Recombinant fusion protein containing a sequence corresponding to amino acids 750-940 of human PHC1 (NP_004417.2).

Synonyms

EDR1; HPH1; RAE28; MCPH11; PHC1

Contact



www.abclonal.com

Product Information

Source

Rabbit

Isotype

IgG

Purification

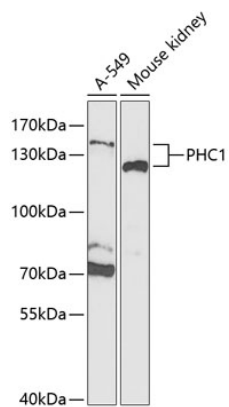
Affinity purification

Storage

Store at -20°C. Avoid freeze / thaw cycles.

Buffer: PBS with 0.02% sodium azide,50% glycerol,pH7.3.

Validation Data



Western blot analysis of extracts of various cell lines, using PHC1 Antibody (A5843) at 1:1000 dilution.

Secondary antibody: HRP Goat Anti-Rabbit IgG (H+L) (AS014) at 1:10000 dilution.

Lysates/proteins: 25µg per lane.

Blocking buffer: 3% nonfat dry milk in TBST.

Detection: ECL Enhanced Kit (RM00021).

Exposure time: 90s.