

A5831

Leader in Biomolecular Solutions for Life Science



[KO Validated] Lsh/HELLS Rabbit pAb

Catalog No.: A5831

KO Validated

3 Publications

Basic Information

Observed MW

120kDa

Calculated MW

97kDa

Category

Polyclonal Antibody

Applications

WB,IP,ELISA

Cross-Reactivity

Human,Mouse,Rat

Background

This gene encodes a lymphoid-specific helicase. Other helicases function in processes involving DNA strand separation, including replication, repair, recombination, and transcription. This protein is thought to be involved with cellular proliferation and may play a role in leukemogenesis. Alternatively spliced transcript variants encoding different isoforms have been identified.

Recommended Dilutions

WB 1:500 - 1:2000

IP 0.5µg-4µg antibody for
200µg-400µg extracts
of whole cells

ELISA Recommended starting
concentration is 1
µg/mL. Please optimize
the concentration
based on your specific
assay requirements.

Immunogen Information

Gene ID

3070

Swiss Prot

Q9NRZ9

Immunogen

Recombinant fusion protein containing a sequence corresponding to amino acids 719-838 of human Lsh/HELLS (NP_060533.2).

Synonyms

LSH; ICF4; PASG; SMARCA6; Nbla10143; LS

Product Information

Source

Rabbit

Isotype

IgG

Purification

Affinity purification

Storage

Store at -20°C. Avoid freeze / thaw cycles.

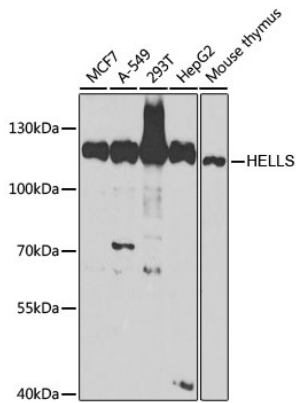
Buffer: PBS with 0.02% sodium azide,50% glycerol,pH7.3.

Contact



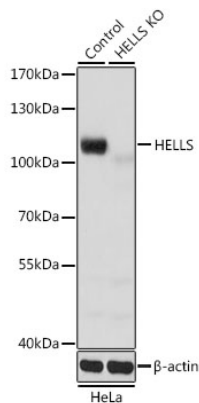
www.abclonal.com

Validation Data



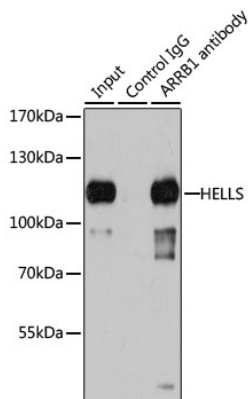
Western blot analysis of various lysates using [KO Validated] Lsh/HELLS Rabbit pAb (A5831) at 1:1000 dilution.
Secondary antibody: HRP-conjugated Goat anti-Rabbit IgG (H+L) (AS014) at 1:10000 dilution.

Lysates/proteins: 25 μ g per lane.
Blocking buffer: 3% nonfat dry milk in TBST.
Detection: ECL Basic Kit (RM00020).
Exposure time: 90s.



Western blot analysis of lysates from wild type (WT) and Lsh/HELLS knockout (KO) HeLa cells, using [KO Validated] Lsh/HELLS Rabbit pAb (A5831) at 1:1000 dilution.
Secondary antibody: HRP-conjugated Goat anti-Rabbit IgG (H+L) (AS014) at 1:10000 dilution.

Lysates/proteins: 25 μ g per lane.
Blocking buffer: 3% nonfat dry milk in TBST.
Detection: ECL Basic Kit (RM00020).
Exposure time: 5s.



Immunoprecipitation analysis of 200 μ g extracts of 293T cells using 1 μ g Lsh/HELLS antibody (A5831). Western blot was performed from the immunoprecipitate using Lsh/HELLS antibody (A5831) at a dilution of 1:1000.