

A5618

Leader in Biomolecular Solutions for Life Science



LC3A/LC3B Rabbit pAb

Catalog No.: A5618

46 Publications

Basic Information

Observed MW

14kDa/16kDa

Calculated MW

14kDa

Category

Polyclonal Antibody

Applications

WB,IHC-P,IF/ICC,ELISA

Cross-Reactivity

Human,Mouse,Rat

Background

MAP1A and MAP1B are microtubule-associated proteins which mediate the physical interactions between microtubules and components of the cytoskeleton. MAP1A and MAP1B each consist of a heavy chain subunit and multiple light chain subunits. The protein encoded by this gene is one of the light chain subunits and can associate with either MAP1A or MAP1B. Two transcript variants encoding different isoforms have been found for this gene. The expression of variant 1 is suppressed in many tumor cell lines, suggesting that may be involved in carcinogenesis.

Recommended Dilutions

WB 1:500 - 1:2000

IHC-P 1:50 - 1:200

IF/ICC 1:50 - 1:200

ELISA Recommended starting concentration is 1 µg/mL. Please optimize the concentration based on your specific assay requirements.

Immunogen Information

Gene ID

84557/81631

Swiss Prot

Q9GZQ8/Q9H492

Immunogen

A synthetic peptide corresponding to a sequence within amino acids 1-60 of human LC3A (NP_115903.1).

Synonyms

MAP1LC3B; ATG8F; LC3B; MAP1A/1BLC3; MAP1LC3B-a; MAP1LC3A; ATG8E; LC3; LC3A; MAP1ALC3; MAP1BLC3; LC3A/LC3B

Product Information

Source

Rabbit

Isotype

IgG

Purification

Affinity purification

Storage

Store at -20°C. Avoid freeze / thaw cycles.

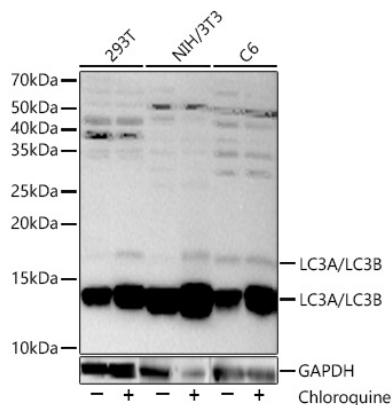
Buffer: PBS with 0.09% Sodium azide,50% glycerol,pH7.3.

Contact



www.abclonal.com

Validation Data



Western blot analysis of various lysates, using LC3A/LC3B Rabbit pAb (A5618) at 1:2000 dilution. 293T, NIH/3T3 and C6 cells were treated by Chloroquine (50 μ M) at 37°C for 20 hours.

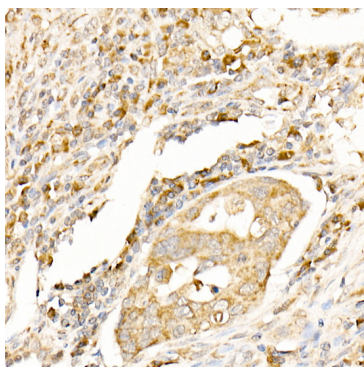
Secondary antibody: HRP-conjugated Goat anti-Rabbit IgG (H+L) (AS014) at 1:10000 dilution.

Lysates/proteins: 25 μ g per lane.

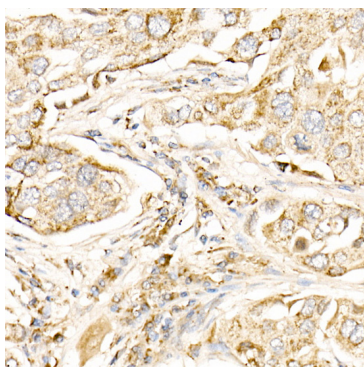
Blocking buffer: 3% nonfat dry milk in TBST.

Detection: ECL Basic Kit (RM00020).

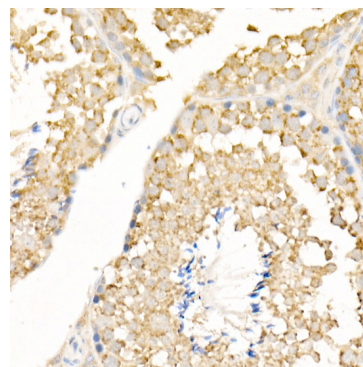
Exposure time: 30s.



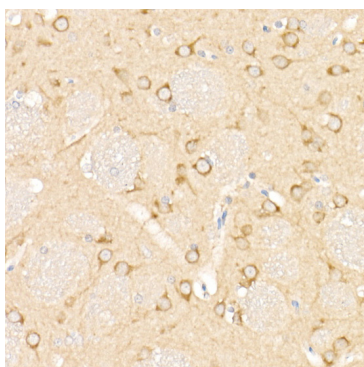
Immunohistochemistry analysis of paraffin-embedded Human colon carcinoma using LC3A/LC3B Rabbit pAb (A5618) at dilution of 1:100 (40x lens). High pressure antigen retrieval performed with 0.01M Citrate Bufferr (pH 6.0) prior to IHC staining.



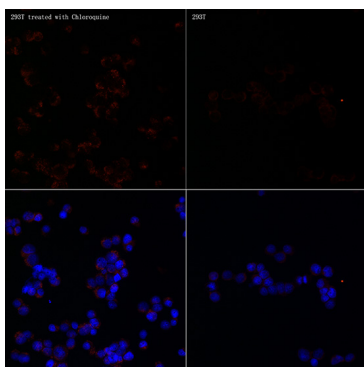
Immunohistochemistry analysis of paraffin-embedded Human lung cancer using LC3A/LC3B Rabbit pAb (A5618) at dilution of 1:100 (40x lens). High pressure antigen retrieval performed with 0.01M Citrate Bufferr (pH 6.0) prior to IHC staining.



Immunohistochemistry analysis of paraffin-embedded Mouse testis using LC3A/LC3B Rabbit pAb (A5618) at dilution of 1:100 (40x lens). High pressure antigen retrieval performed with 0.01M Citrate Bufferr (pH 6.0) prior to IHC staining.



Immunohistochemistry analysis of paraffin-embedded Rat brain using LC3A/LC3B Rabbit pAb (A5618) at dilution of 1:100 (40x lens). High pressure antigen retrieval performed with 0.01M Citrate Bufferr (pH 6.0) prior to IHC staining.



Immunofluorescence analysis of 293T Treated with Chloroquine and 293T cells using LC3A/LC3B Rabbit pAb (A5618) at dilution of 1:100 (40x lens). Secondary antibody: Cy3-conjugated Goat anti-Rabbit IgG (H+L) (AS007) at 1:500 dilution. Blue: DAPI for nuclear staining.