

A5501

Leader in Biomolecular Solutions for Life Science



## TLE1 Rabbit pAb

Catalog No.: A5501

### Basic Information

**Observed MW**

83kDa

**Calculated MW**

83kDa

**Category**

Polyclonal Antibody

**Applications**

WB, ELISA

**Cross-Reactivity**

Human

### Background

Enables identical protein binding activity and transcription corepressor activity. Involved in negative regulation of I-kappaB kinase/NF-kappaB signaling; negative regulation of anoikis; and regulation of gene expression. Located in cytosol and nucleoplasm. Part of beta-catenin-TCF complex.

### Recommended Dilutions

WB 1:500 - 1:2000

### Immunogen Information

**Gene ID**

7088

**Swiss Prot**

Q04724

**Immunogen**

Recombinant fusion protein containing a sequence corresponding to amino acids 501-770 of human TLE1 (NP\_005068.2).

**Synonyms**

ESG; ESG1; GRG1; TLE-1; TLE1

### Contact



[www.abclonal.com](http://www.abclonal.com)

### Product Information

**Source**

Rabbit

**Isotype**

IgG

**Purification**

Affinity purification

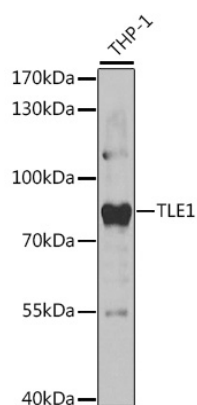
**Storage**

Store at -20°C. Avoid freeze / thaw cycles.

Buffer: PBS with 0.02% sodium azide, 50% glycerol, pH 7.3.

## Validation Data

---



Western blot analysis of extracts of THP-1 cells, using TLE1 antibody (A5501) at 1:1000 dilution.  
Secondary antibody: HRP Goat Anti-Rabbit IgG (H+L) (A5014) at 1:10000 dilution.  
Lysates/proteins: 25µg per lane.  
Blocking buffer: 3% nonfat dry milk in TBST.  
Detection: ECL Basic Kit (RM00020).  
Exposure time: 30s.