

A5473

Leader in Biomolecular Solutions for Life Science



MYL2 Rabbit pAb

Catalog No.: A5473

Basic Information

Observed MW

19kDa

Calculated MW

19kDa

Category

Polyclonal Antibody

Applications

WB,IF/ICC,ELISA

Cross-Reactivity

Human,Mouse,Rat

Background

This gene encodes a major sarcomeric protein in mammalian striated muscle. The encoded protein plays a role in embryonic heart muscle structure and function, while phosphorylation of the encoded protein is involved in cardiac myosin cycling kinetics, torsion and function in adults. Mutations in this gene are associated with hypertrophic cardiomyopathy 10 and infant-onset myopathy.

Recommended Dilutions

WB 1:500 - 1:2000

IF/ICC 1:50 - 1:200

ELISA Recommended starting concentration is 1 µg/mL. Please optimize the concentration based on your specific assay requirements.

Immunogen Information

Gene ID

4633

Swiss Prot

P10916

Immunogen

Recombinant fusion protein containing a sequence corresponding to amino acids 1-166 of human MYL2 (NP_000423.2).

Synonyms

MLC2; CMH10; MFM12; MLC-2; MLC-2v; MLC-2s/v; MYL2

Contact



www.abclonal.com

Product Information

Source

Rabbit

Isotype

IgG

Purification

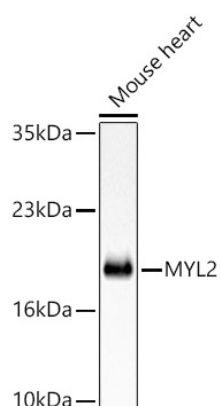
Affinity purification

Storage

Store at -20°C. Avoid freeze / thaw cycles.

Buffer: PBS with 0.02% sodium azide, 50% glycerol, pH7.3.

Validation Data



Western blot analysis of lysates from Mouse heart, using MYL2 Rabbit pAb (A5473) at 1:1000 dilution.

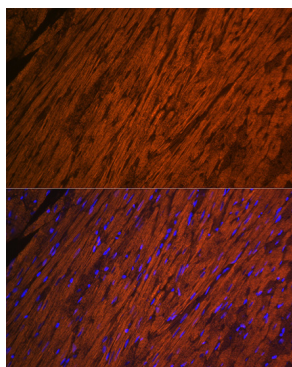
Secondary antibody: HRP-conjugated Goat anti-Rabbit IgG (H+L) (AS014) at 1:10000 dilution.

Lysates/proteins: 25µg per lane.

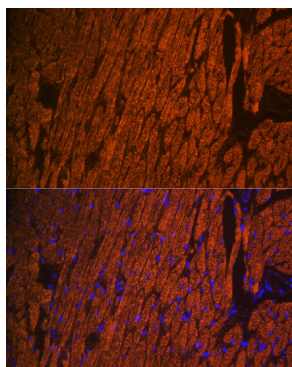
Blocking buffer: 3% nonfat dry milk in TBST.

Detection: ECL Basic Kit (RM00020).

Exposure time: 30s.



Immunofluorescence analysis of paraffin-embedded rat heart using MYL2 Rabbit pAb (A5473) at dilution of 1:100 (40x lens). Secondary antibody: Cy3-conjugated Goat anti-Rabbit IgG (H+L) (AS007) at 1:500 dilution. Blue: DAPI for nuclear staining.



Immunofluorescence analysis of paraffin-embedded mouse heart using MYL2 Rabbit pAb (A5473) at dilution of 1:100 (40x lens). Secondary antibody: Cy3-conjugated Goat anti-Rabbit IgG (H+L) (AS007) at 1:500 dilution. Blue: DAPI for nuclear staining.