

A5404

Leader in Biomolecular Solutions for Life Science



[KO Validated] EEF2K Rabbit pAb

Catalog No.: A5404 **KO Validated**

Basic Information

Observed MW

110kDa

Calculated MW

82kDa

Category

Polyclonal Antibody

Applications

WB,IF/ICC,ELISA

Cross-Reactivity

Human,Mouse

Background

This gene encodes a highly conserved protein kinase in the calmodulin-mediated signaling pathway that links activation of cell surface receptors to cell division. This kinase is involved in the regulation of protein synthesis. It phosphorylates eukaryotic elongation factor 2 (EEF2) and thus inhibits the EEF2 function. The activity of this kinase is increased in many cancers and may be a valid target for anti-cancer treatment.

Recommended Dilutions

WB 1:500 - 1:2000

IF/ICC 1:50 - 1:200

ELISA Recommended starting concentration is 1 µg/mL. Please optimize the concentration based on your specific assay requirements.

Immunogen Information

Gene ID

29904

Swiss Prot

O00418

Immunogen

Recombinant protein (or fragment). This information is considered to be commercially sensitive.

Synonyms

eEF-2K; CaMKIII; HSU93850; 2K

Contact

 www.abclonal.com

Product Information

Source

Rabbit

Isotype

IgG

Purification

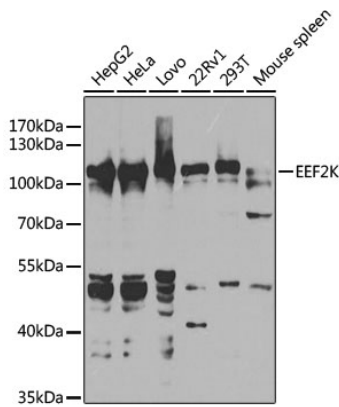
Affinity purification

Storage

Store at -20°C. Avoid freeze / thaw cycles.

Buffer: PBS containing 50% glycerol, preserved with proclin300 or sodium azide (as specified on the Certificate of Analysis), pH 7.3.

Validation Data



Western blot analysis of various lysates using [KO Validated] EEF2K Rabbit pAb (A5404) at 1:1000 dilution.

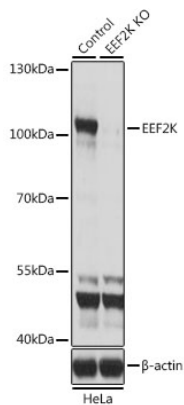
Secondary antibody: HRP-conjugated Goat anti-Rabbit IgG (H+L) (AS014) at 1:10000 dilution.

Lysates/proteins: 25µg per lane.

Blocking buffer: 3% nonfat dry milk in TBST.

Detection: ECL Basic Kit (RM00020).

Exposure time: 40s.



Western blot analysis of lysates from wild type (WT) and EEF2K knockout (KO) HeLa cells, using [KO Validated] EEF2K Rabbit pAb (A5404) at 1:1000 dilution.

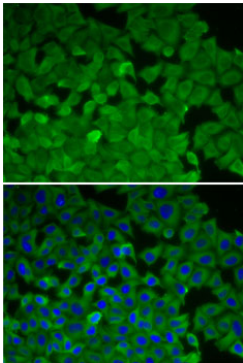
Secondary antibody: HRP-conjugated Goat anti-Rabbit IgG (H+L) (AS014) at 1:10000 dilution.

Lysates/proteins: 25µg per lane.

Blocking buffer: 3% nonfat dry milk in TBST.

Detection: ECL Basic Kit (RM00020).

Exposure time: 1s.



Immunofluorescence analysis of A-549 cells using [KO Validated] EEF2K Rabbit pAb (A5404).

Secondary antibody: Cy3-conjugated Goat anti-Rabbit IgG (H+L) (AS007)

at 1:500 dilution. Blue: DAPI for nuclear staining.

Blue: DAPI for nuclear staining.

Blue: DAPI for nuclear staining.