

A5332

Leader in Biomolecular Solutions for Life Science



SLC4A4 / NBC Rabbit pAb

Catalog No.: A5332

2 Publications

Basic Information

Observed MW

135kDa

Calculated MW

121kDa

Category

Polyclonal Antibody

Applications

WB,IF/ICC,ELISA

Cross-Reactivity

Human,Mouse,Rat

Background

This gene encodes a sodium bicarbonate cotransporter (NBC) involved in the regulation of bicarbonate secretion and absorption and intracellular pH. Mutations in this gene are associated with proximal renal tubular acidosis. Multiple transcript variants encoding different isoforms have been found for this gene.

Recommended Dilutions

WB 1:500 - 1:1000

IF/ICC 1:50 - 1:200

ELISA Recommended starting concentration is 1 µg/mL. Please optimize the concentration based on your specific assay requirements.

Immunogen Information

Gene ID

8671

Swiss Prot

Q9Y6R1

Immunogen

Synthetic peptide. This information is considered to be commercially sensitive.

Synonyms

KNBC; NBC1; NBC2; pNBC; HNBC1; NBCe1; hhNMC; kNBC1; SLC4A5; NBCe1-A; SLC4A4 / NBC

Contact

 www.abclonal.com

Product Information

Source

Rabbit

Isotype

IgG

Purification

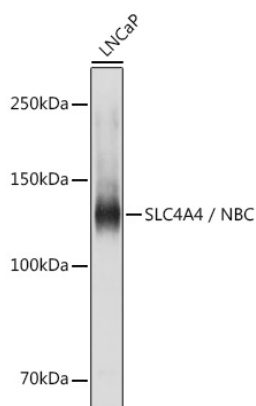
Affinity purification

Storage

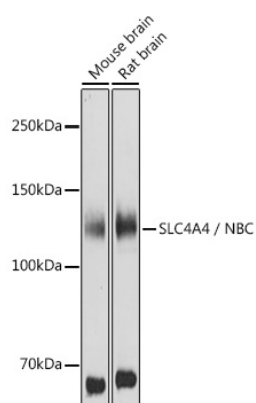
Store at -20°C. Avoid freeze / thaw cycles.

Buffer: PBS with 0.09% Sodium azide, 50% glycerol, pH 7.3.

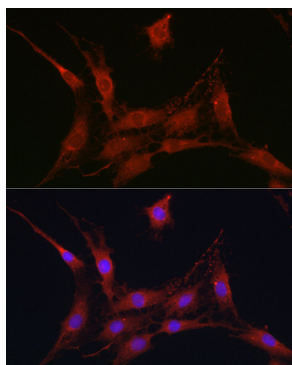
Validation Data



Western blot analysis of lysates from LNCaP cells, using SLC4A4 / NBC Rabbit pAb (A5332) at 1:1000 dilution.
Secondary antibody: HRP-conjugated Goat anti-Rabbit IgG (H+L) (AS014) at 1:10000 dilution.
Lysates/proteins: 25µg per lane.
Blocking buffer: 3% nonfat dry milk in TBST.
Detection: ECL Basic Kit (RM00020).
Exposure time: 1s.



Western blot analysis of various lysates using SLC4A4 / NBC Rabbit pAb (A5332) at 1:1000 dilution.
Secondary antibody: HRP-conjugated Goat anti-Rabbit IgG (H+L) (AS014) at 1:10000 dilution.
Lysates/proteins: 25µg per lane.
Blocking buffer: 3% nonfat dry milk in TBST.
Detection: ECL Basic Kit (RM00020).
Exposure time: 30s.



Immunofluorescence analysis of C6 cells using SLC4A4 / NBC Rabbit pAb (A5332) at dilution of 1:100 (40x lens). Secondary antibody: Cy3-conjugated Goat anti-Rabbit IgG (H+L) (AS007) at 1:500 dilution. Blue: DAPI for nuclear staining.