

A5180

Leader in Biomolecular Solutions for Life Science



RUVBL1/TIP49A/PONTIN Rabbit mAb

Catalog No.: A5180

Recombinant

Basic Information

Observed MW

51kDa

Calculated MW

50kDa

Category

SMab Recombinant Monoclonal
Antibody

Applications

WB,IHC-P,ChIP,ELISA

Cross-Reactivity

Human,Mouse,Rat

CloneNo number

ARC1247

Background

This gene encodes a protein that has both DNA-dependent ATPase and DNA helicase activities and belongs to the ATPases associated with diverse cellular activities (AAA+) protein family. The encoded protein associates with several multisubunit transcriptional complexes and with protein complexes involved in both ATP-dependent remodeling and histone modification. Alternate splicing results in multiple transcript variants.

Recommended Dilutions

WB 1:500 - 1:2000

IHC-P 1:50 - 1:200

ChIP 5µg antibody for
10µg-15µg of
Chromatin

ELISA Recommended starting
concentration is 1
µg/mL. Please optimize
the concentration
based on your specific
assay requirements.

Immunogen Information

Gene ID

8607

Swiss Prot

Q9Y265

Immunogen

Synthetic peptide. This information is considered to be commercially sensitive.

Synonyms

RVB1; TIH1; ECP54; TIP49; ECP-54; INO80H; NMP238; PONTIN; TIP49A; NMP 238;
Pontin52; RUVBL1/TIP49A/PONTIN

Product Information

Source

Rabbit

Isotype

IgG

Purification

Affinity purification

Storage

Store at -20°C. Avoid freeze / thaw cycles.

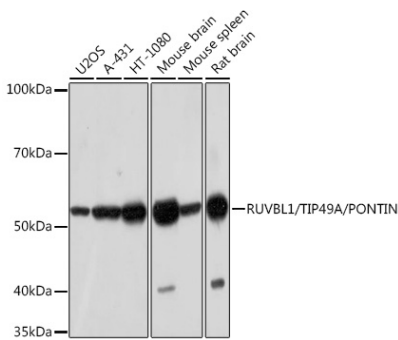
Buffer: PBS with 0.02% sodium azide,0.05% BSA,50% glycerol,pH7.3.

Contact

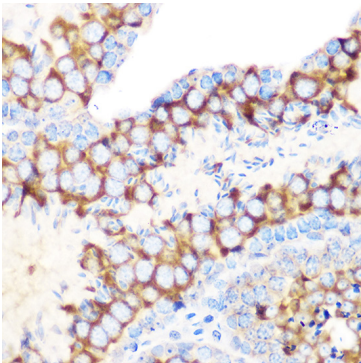


www.abclonal.com

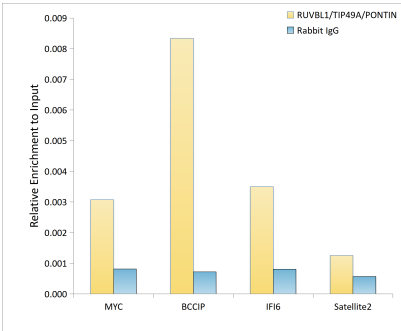
Validation Data



Western blot analysis of various lysates using RUVBL1/TIP49A/PONTIN Rabbit mAb (A5180) at 1:1000 dilution.
Secondary antibody: HRP-conjugated Goat anti-Rabbit IgG (H+L) (AS014) at 1:10000 dilution.
Lysates/proteins: 25µg per lane.
Blocking buffer: 3% nonfat dry milk in TBST.
Detection: ECL Basic Kit (RM00020).
Exposure time: 3min.



Immunohistochemistry analysis of paraffin-embedded Mouse testis using RUVBL1/TIP49A/PONTIN Rabbit mAb (A5180) at dilution of 1:100 (40x lens). Microwave antigen retrieval performed with 0.01M Tris/EDTA Buffer (pH 9.0) prior to IHC staining.



Chromatin immunoprecipitation analysis of extracts of HepG2 cells, using RUVBL1/TIP49A/PONTIN Rabbit mAb antibody (A5180) and rabbit IgG. The amount of immunoprecipitated DNA was checked by quantitative PCR. Histogram was constructed by the ratios of the immunoprecipitated DNA to the input.