

A5128

Leader in Biomolecular Solutions for Life Science



NEDD1 Rabbit pAb

Catalog No.: A5128

Basic Information

Observed MW

78kDa

Calculated MW

72kDa

Category

Polyclonal Antibody

Applications

WB,IF/ICC,ELISA

Cross-Reactivity

Human,Mouse,Rat

Background

Predicted to be involved in protein localization to centrosome. Located in centrosome; nucleoplasm; and plasma membrane.

Recommended Dilutions

WB 1:500 - 1:2000

IF/ICC 1:50 - 1:200

Immunogen Information

Gene ID

121441

Swiss Prot

Q8NHV4

Immunogen

Recombinant fusion protein containing a sequence corresponding to amino acids 411-660 of human NEDD1 (NP_690869.1).

Synonyms

GCP-WD; TUBGCP7; NEDD1

Contact



www.abclonal.com

Product Information

Source

Rabbit

Isotype

IgG

Purification

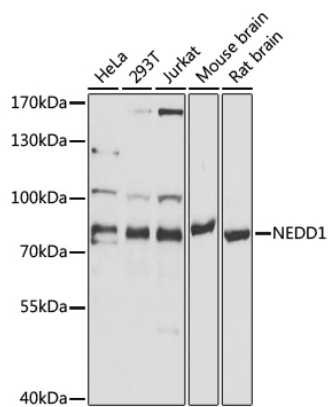
Affinity purification

Storage

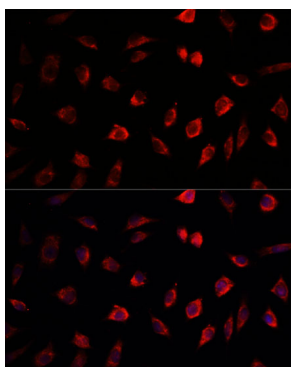
Store at -20°C. Avoid freeze / thaw cycles.

Buffer: PBS with 0.02% sodium azide,50% glycerol,pH7.3.

Validation Data



Western blot analysis of extracts of various cell lines, using NEDD1 antibody (A5128) at 1:1000 dilution.
Secondary antibody: HRP Goat Anti-Rabbit IgG (H+L) (A5014) at 1:10000 dilution.
Lysates/proteins: 25µg per lane.
Blocking buffer: 3% nonfat dry milk in TBST.
Detection: ECL Basic Kit (RM00020).
Exposure time: 30s.



Immunofluorescence analysis of L929 cells using NEDD1 antibody (A5128) at dilution of 1:100. Blue: DAPI for nuclear staining.