

A5098

Leader in Biomolecular Solutions for Life Science



# MAD1/MAD1L1 Rabbit mAb

Catalog No.: A5098 **Recombinant**

## Basic Information

### Observed MW

83kDa

### Calculated MW

83kDa

### Category

SMab Recombinant Monoclonal  
Antibody

### Applications

WB,ELISA

### Cross-Reactivity

Human,Mouse

### CloneNo number

ARC1188

## Recommended Dilutions

**WB** 1:1000 - 1:6000

**ELISA** Recommended starting concentration is 1 µg/mL. Please optimize the concentration based on your specific assay requirements.

## Contact

 [www.abclonal.com](http://www.abclonal.com)

## Background

MAD1L1 is a component of the mitotic spindle-assembly checkpoint that prevents the onset of anaphase until all chromosome are properly aligned at the metaphase plate. MAD1L1 functions as a homodimer and interacts with MAD2L1. MAD1L1 may play a role in cell cycle control and tumor suppression. Alternative splicing results in multiple transcript variants.

## Immunogen Information

### Gene ID

8379

### Swiss Prot

Q9Y6D9

### Immunogen

A synthetic peptide corresponding to a sequence within amino acids 50-150 of human MAD1/MAD1L1 (Q9Y6D9).

### Synonyms

MAD1; MVA7; PIG9; TP53I9; TXBP181; MAD1/MAD1L1

## Product Information

### Source

Rabbit

### Isotype

IgG

### Purification

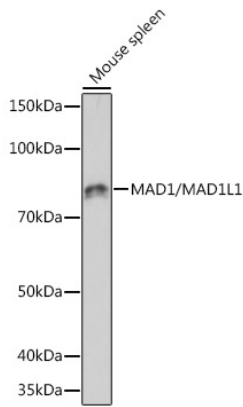
Affinity purification

### Storage

Store at -20°C. Avoid freeze / thaw cycles.

Buffer: PBS with 0.02% sodium azide,0.05% BSA,50% glycerol,pH7.3.

## Validation Data



Western blot analysis of lysates from Mouse spleen, using MAD1/MAD1L1 Rabbit mAb (A5098) at 1:1000 dilution.

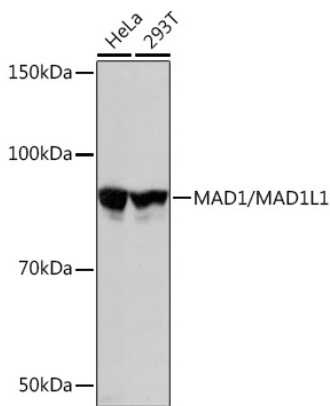
Secondary antibody: HRP-conjugated Goat anti-Rabbit IgG (H+L) (AS014) at 1:10000 dilution.

Lysates/proteins: 25µg per lane.

Blocking buffer: 3% nonfat dry milk in TBST.

Detection: ECL Basic Kit (RM00020).

Exposure time: 60s.



Western blot analysis of various lysates using MAD1/MAD1L1 Rabbit mAb (A5098) at 1:3000 dilution.

Secondary antibody: HRP-conjugated Goat anti-Rabbit IgG (H+L) (AS014) at 1:10000 dilution.

Lysates/proteins: 25µg per lane.

Blocking buffer: 3% nonfat dry milk in TBST.

Detection: ECL Basic Kit (RM00020).

Exposure time: 3s.