

A5067

Leader in Biomolecular Solutions for Life Science



CYP17A1 Rabbit mAb

Catalog No.: A5067

Recombinant

3 Publications

Basic Information

Observed MW

55kDa

Calculated MW

57kDa

Category

SMab Recombinant Monoclonal Antibody

Applications

WB,IF/ICC,ELISA

Cross-Reactivity

Human,Mouse

CloneNo number

ARC1257

Recommended Dilutions

WB 1:1000 - 1:6000

IF/ICC 1:50 - 1:200

ELISA Recommended starting concentration is 1 µg/mL. Please optimize the concentration based on your specific assay requirements.

Contact

 www.abclonal.com

Background

This gene encodes a member of the cytochrome P450 superfamily of enzymes. The cytochrome P450 proteins are monooxygenases which catalyze many reactions involved in drug metabolism and synthesis of cholesterol, steroids and other lipids. This protein localizes to the endoplasmic reticulum. It has both 17 α -hydroxylase and 17,20-lyase activities and is a key enzyme in the steroidogenic pathway that produces progestins, mineralocorticoids, glucocorticoids, androgens, and estrogens. Mutations in this gene are associated with isolated steroid-17 α -hydroxylase deficiency, 17- α -hydroxylase/17,20-lyase deficiency, pseudohermaphroditism, and adrenal hyperplasia.

Immunogen Information

Gene ID

1586

Swiss Prot

P05093

Immunogen

Recombinant fusion protein containing a sequence corresponding to amino acids 101-220 of human CYP17A1 (P05093).

Synonyms

CPT7; CYP17; S17AH; P450C17; CYP17A1

Product Information

Source

Rabbit

Isotype

IgG

Purification

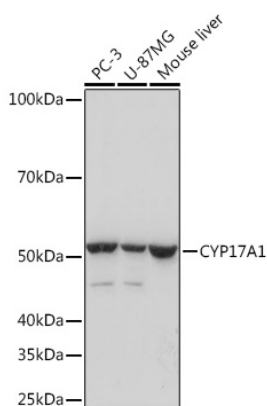
Affinity purification

Storage

Store at -20°C. Avoid freeze / thaw cycles.

Buffer: PBS with 0.02% sodium azide,0.05% BSA,50% glycerol,pH7.3.

Validation Data



Western blot analysis of various lysates using CYP17A1 Rabbit mAb (A5067) at 1:1000 dilution.

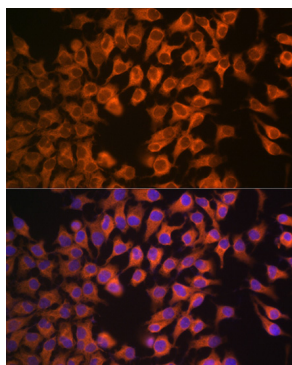
Secondary antibody: HRP-conjugated Goat anti-Rabbit IgG (H+L) (AS014) at 1:10000 dilution.

Lysates/proteins: 25µg per lane.

Blocking buffer: 3% nonfat dry milk in TBST.

Detection: ECL Basic Kit (RM00020).

Exposure time: 3s.



Immunofluorescence analysis of HeLa cells using CYP17A1 Rabbit mAb (A5067) at dilution of 1:100 (40x lens). Secondary antibody: Cy3-conjugated Goat anti-Rabbit IgG (H+L) (AS007) at 1:500 dilution. Blue: DAPI for nuclear staining.