

A4991

Leader in Biomolecular Solutions for Life Science



# RMI1 Rabbit pAb

Catalog No.: A4991

## Basic Information

### Observed MW

75kDa

### Calculated MW

70kDa

### Category

Polyclonal Antibody

### Applications

WB,ELISA

### Cross-Reactivity

Human,Mouse

## Background

Predicted to enable nucleotide binding activity. Predicted to be involved in double-strand break repair via homologous recombination and resolution of meiotic recombination intermediates. Predicted to act upstream of or within glucose homeostasis; reduction of food intake in response to dietary excess; and response to glucose. Located in nuclear body.

## Recommended Dilutions

**WB** 1:200 - 1:2000

**ELISA** Recommended starting concentration is 1 µg/mL. Please optimize the concentration based on your specific assay requirements.

## Immunogen Information

### Gene ID

80010

### Swiss Prot

Q9H9A7

### Immunogen

Recombinant protein (or fragment). This information is considered to be commercially sensitive.

### Synonyms

BLAP75; FAAP75; C9orf76; RMI1

## Contact



[www.abclonal.com](http://www.abclonal.com)

## Product Information

### Source

Rabbit

### Isotype

IgG

### Purification

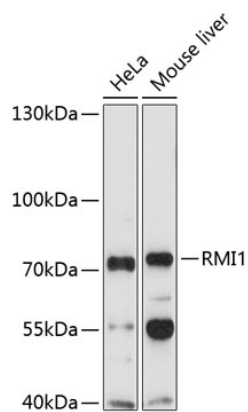
Affinity purification

### Storage

Store at -20°C. Avoid freeze / thaw cycles.

Buffer: PBS with 0.02% sodium azide, 50% glycerol, pH7.3.

## Validation Data



Western blot analysis of various lysates using RMI1 Rabbit pAb (A4991) at 1:1000 dilution.

Secondary antibody: HRP-conjugated Goat anti-Rabbit IgG (H+L) (AS014) at 1:10000 dilution.

Lysates/proteins: 25µg per lane.

Blocking buffer: 3% nonfat dry milk in TBST.

Detection: ECL Enhanced Kit (RM00021).

Exposure time: 90s.