

A4934

Leader in Biomolecular Solutions for Life Science



# Carbonic Anhydrase 9 (CA9/G250) Rabbit mAb

Catalog No.: A4934

Recombinant

1 Publications

## Basic Information

### Observed MW

35-58kDa

### Calculated MW

50kDa

### Category

SMab Recombinant Monoclonal Antibody

### Applications

WB,IHC-P,ELISA

### Cross-Reactivity

Human

### CloneNo number

ARC1275

## Recommended Dilutions

WB	1:500 - 1:2000
IHC-P	1:50 - 1:200

## Contact

 [www.abclonal.com](http://www.abclonal.com)

## Background

Carbonic anhydrases (CAs) are a large family of zinc metalloenzymes that catalyze the reversible hydration of carbon dioxide. They participate in a variety of biological processes, including respiration, calcification, acid-base balance, bone resorption, and the formation of aqueous humor, cerebrospinal fluid, saliva, and gastric acid. They show extensive diversity in tissue distribution and in their subcellular localization. CA IX is a transmembrane protein and is one of only two tumor-associated carbonic anhydrase isoenzymes known. It is expressed in all clear-cell renal cell carcinoma, but is not detected in normal kidney or most other normal tissues. It may be involved in cell proliferation and transformation. This gene was mapped to 17q21.2 by fluorescence in situ hybridization, however, radiation hybrid mapping localized it to 9p13-p12.

## Immunogen Information

<b>Gene ID</b>	<b>Swiss Prot</b>
768	Q16790

### Immunogen

A synthetic peptide corresponding to a sequence within amino acids 200-300 of human Carbonic Anhydrase 9 (CA9/G250) (Q16790).

### Synonyms

MN; CAIX; Carbonic Anhydrase 9 (CA9/G250)

## Product Information

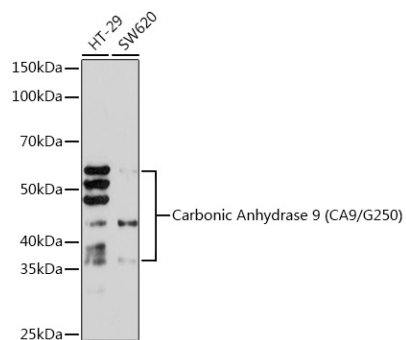
<b>Source</b>	<b>Isotype</b>	<b>Purification</b>
Rabbit	IgG	Affinity purification

### Storage

Store at -20°C. Avoid freeze / thaw cycles.

Buffer: PBS with 0.02% sodium azide, 0.05% BSA, 50% glycerol, pH7.3.

## Validation Data



Western blot analysis of various lysates using Carbonic Anhydrase 9 (CA9/G250) Rabbit mAb (A4934) at 1:1000 dilution.

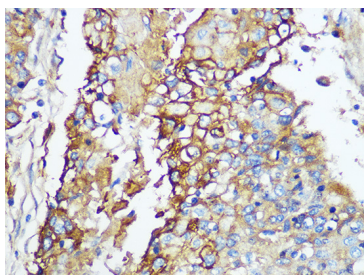
Secondary antibody: HRP Goat Anti-Rabbit IgG (H+L) (AS014) at 1:10000 dilution.

Lysates/proteins: 25µg per lane.

Blocking buffer: 3% nonfat dry milk in TBST.

Detection: ECL Basic Kit (RM00020).

Exposure time: 30s.



Immunohistochemistry analysis of paraffin-embedded Human esophageal using Carbonic Anhydrase 9 (CA9/G250) Rabbit mAb (A4934) at dilution of 1:100 (40x lens). Perform microwave antigen retrieval with 10 mM PBS buffer pH 7.2 before commencing with IHC staining protocol.