

A4919

Leader in Biomolecular Solutions for Life Science



Caspase-9 Rabbit mAb

Catalog No.: A4919

Recombinant

Basic Information

Observed MW

47kDa

Calculated MW

46kDa

Category

Monoclonal Antibody

Applications

WB,ELISA

Cross-Reactivity

Human

CloneNo number

ARC1146

Recommended Dilutions

WB 1:500 - 1:1000

ELISA Recommended starting concentration is 1 µg/mL. Please optimize the concentration based on your specific assay requirements.

Contact

 www.abclonal.com

Background

This gene encodes a member of the cysteine-aspartic acid protease (caspase) family. Sequential activation of caspases plays a central role in the execution-phase of cell apoptosis. Caspases exist as inactive proenzymes which undergo proteolytic processing at conserved aspartic residues to produce two subunits, large and small, that dimerize to form the active enzyme. This protein can undergo autoproteolytic processing and activation by the apoptosome, a protein complex of cytochrome c and the apoptotic peptidase activating factor 1; this step is thought to be one of the earliest in the caspase activation cascade. This protein is thought to play a central role in apoptosis and to be a tumor suppressor. Alternative splicing results in multiple transcript variants.

Immunogen Information

Gene ID

842

Swiss Prot

P55211

Immunogen

Synthetic peptide. This information is considered to be commercially sensitive.

Synonyms

MCH6; APAF3; APAF-3; PPP1R56; ICE-LAP6; Caspase-9

Product Information

Source

Rabbit

Isotype

IgG

Purification

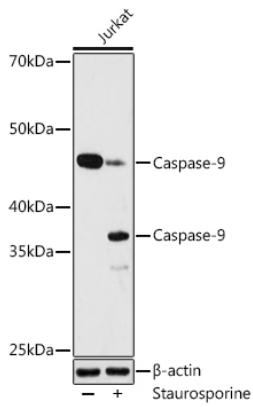
Affinity purification

Storage

Store at -20°C. Avoid freeze / thaw cycles.

Buffer: PBS containing 50% glycerol and 0.05% BSA, preserved with proclin300 or sodium azide (as specified on the Certificate of Analysis), pH 7.3.

Validation Data



Western blot analysis of lysates from Jurkat cells, using Caspase-9 Rabbit mAb (A4919) at 1:1000 dilution. Jurkat cells were treated with staurosporine(1 uM) for 3 hour. Secondary antibody: HRP-conjugated Goat anti-Rabbit IgG (H+L) (AS014) at 1:10000 dilution.

Lysates/proteins: 25µg per lane.

Blocking buffer: 3% nonfat dry milk in TBST.

Detection: ECL Basic Kit (RM00020).

Exposure time: 180s.