

A4900

Leader in Biomolecular Solutions for Life Science



CD31/PECAM1 Rabbit mAb

Catalog No.: A4900

Recombinant

10 Publications

Basic Information

Observed MW

130kDa

Calculated MW

83kDa

Category

SMab Recombinant Monoclonal
Antibody

Applications

WB, ELISA, IF-P

Cross-Reactivity

Human, Mouse

CloneNo number

ARC50355

Background

The protein encoded by this gene is found on the surface of platelets, monocytes, neutrophils, and some types of T-cells, and makes up a large portion of endothelial cell intercellular junctions. The encoded protein is a member of the immunoglobulin superfamily and is likely involved in leukocyte migration, angiogenesis, and integrin activation.

Recommended Dilutions

WB 1:1000 - 1:5000

IF-P 1:50 - 1:200

ELISA Recommended starting concentration is 1 µg/mL. Please optimize the concentration based on your specific assay requirements.

Immunogen Information

Gene ID

5175

Swiss Prot

P16284

Immunogen

Recombinant protein (or fragment). This information is considered to be commercially sensitive.

Synonyms

CD31; PECA1; GPIIA'; PECAM-1; endoCAM; CD31/EndoCAM; CD31/PECAM1

Contact

 www.abclonal.com

Product Information

Source

Rabbit

Isotype

IgG

Purification

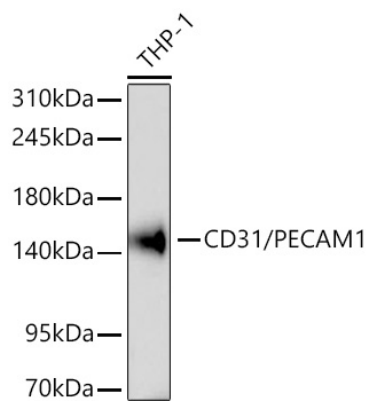
Affinity purification

Storage

Store at -20°C. Avoid freeze / thaw cycles.

Buffer: PBS containing 50% glycerol and 0.05% BSA, preserved with proclin300 or sodium azide (as specified on the Certificate of Analysis), pH 7.3.

Validation Data



Western blot analysis of lysates from THP-1 cells using CD31/PECAM1 Rabbit mAb (A4900) at 1:5000 dilution .
Secondary antibody: HRP-conjugated Goat anti-Rabbit IgG (H+L) (AS014) at 1:10000 dilution.
Lysates/proteins: μ g per lane.
Blocking buffer: 3% nonfat dry milk in TBST.
Detection: ECL Basic Kit (RM00020).
Exposure time: 180s.