

A4896

Leader in Biomolecular Solutions for Life Science



## KIF23 Rabbit mAb

Catalog No.: A4896

Recombinant

2 Publications

### Basic Information

#### Observed MW

110kDa

#### Calculated MW

110kDa

#### Category

SMab Recombinant Monoclonal  
Antibody

#### Applications

WB,IP,ELISA

#### Cross-Reactivity

Human,Rat

#### CloneNo number

ARC0335

### Recommended Dilutions

**WB** 1:500 - 1:1000

**IP** 0.5µg-4µg antibody for  
200µg-400µg extracts  
of whole cells

**ELISA** Recommended starting  
concentration is 1  
µg/mL. Please optimize  
the concentration  
based on your specific  
assay requirements.

### Contact



[www.abclonal.com](http://www.abclonal.com)

### Background

The protein encoded by this gene is a member of kinesin-like protein family. This family includes microtubule-dependent molecular motors that transport organelles within cells and move chromosomes during cell division. This protein has been shown to cross-bridge antiparallel microtubules and drive microtubule movement in vitro. Alternate splicing of this gene results in multiple transcript variants.

### Immunogen Information

#### Gene ID

9493

#### Swiss Prot

Q02241

#### Immunogen

Recombinant protein (or fragment). This information is considered to be commercially sensitive.

#### Synonyms

CDA3; CHO1; CDAN3; KNSL5; MKLP1; CDAIII; CDAN3A; MKLP-1; KIF23

### Product Information

#### Source

Rabbit

#### Isotype

IgG

#### Purification

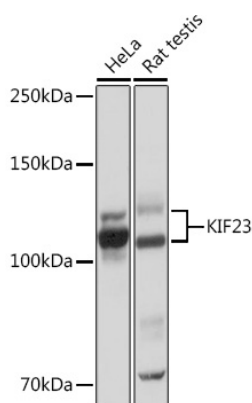
Affinity purification

#### Storage

Store at -20°C. Avoid freeze / thaw cycles.

Buffer: PBS with 0.02% sodium azide, 0.05% BSA, 50% glycerol, pH7.3.

## Validation Data



Western blot analysis of various lysates using KIF23 Rabbit mAb (A4896) at 1:1000 dilution.

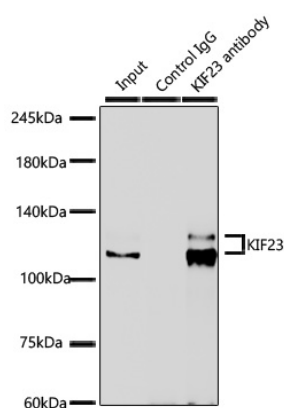
Secondary antibody: HRP-conjugated Goat anti-Rabbit IgG (H+L) (AS014) at 1:10000 dilution.

Lysates/proteins: 25µg per lane.

Blocking buffer: 3% nonfat dry milk in TBST.

Detection: ECL Basic Kit (RM00020).

Exposure time: 10s.



Immunoprecipitation analysis of 300 µg extracts of HeLa cells using 3 µg KIF23 Rabbit mAb (A4896). Western blot was performed from the immunoprecipitate using KIF23 Rabbit mAb (A4896) at a dilution of 1:1000.