

A4885

Leader in Biomolecular Solutions for Life Science



Calmodulin 1/2/3 Rabbit mAb

Catalog No.: A4885

Recombinant

4 Publications

Basic Information

Observed MW

17kDa

Calculated MW

16kDa

Category

SMab Recombinant Monoclonal
Antibody

Applications

WB,IF/ICC,ELISA

Cross-Reactivity

Human,Mouse,Rat

CloneNo number

ARC0316

Background

This gene encodes a member of the EF-hand calcium-binding protein family. It is one of three genes which encode an identical calcium binding protein which is one of the four subunits of phosphorylase kinase. Two pseudogenes have been identified on chromosome 7 and X. Multiple transcript variants encoding different isoforms have been found for this gene.[provided by RefSeq, Oct 2009]

Recommended Dilutions

WB 1:1000 - 1:6000

IF/ICC 1:100 - 1:1000

ELISA Recommended starting concentration is 1 µg/mL. Please optimize the concentration based on your specific assay requirements.

Immunogen Information

Gene ID
801/805/808

Swiss Prot
P0DP23/P0DP24/P0DP25


Immunogen

A synthetic peptide corresponding to a sequence within amino acids 70-149 of human Calmodulin (NP_008819.1).

Synonyms

CALML2; CAMI; CPVT4; DD132; LQT14; PHKD; caM; Calmodulin 1/2/3

Contact

 www.abclonal.com

Product Information

Source
Rabbit

Isotype
IgG

Purification
Affinity purification

Storage

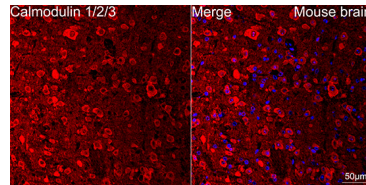
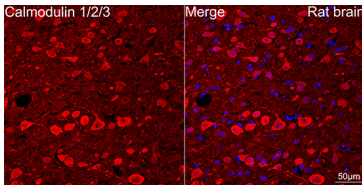
Store at -20°C. Avoid freeze / thaw cycles.

Buffer: PBS with 0.02% sodium azide,0.05% BSA,50% glycerol,pH7.3.

Validation Data



Western blot analysis of various lysates using Calmodulin 1/2/3 Rabbit mAb (A4885) at 1:1000 dilution incubated at room temperature for 1.5 hours.
Secondary antibody: HRP-conjugated Goat anti-Rabbit IgG (H+L) (AS014) at 1:10000 dilution.
Lysates/proteins: 25 µg per lane.
Blocking buffer: 3% nonfat dry milk in TBST.
Detection: ECL Basic Kit (RM00020).
Exposure time: 10s.



Confocal imaging of paraffin-embedded Rat brain using Calmodulin 1/2/3 Rabbit mAb (A4885, dilution 1:100) followed by a further incubation with Cy3 Goat Anti-Rabbit IgG (H+L) (AS007, dilution 1:500) (Red). DAPI was used for nuclear staining (Blue). Objective: 40x. Perform microwave antigen retrieval with 0.01 M citrate buffer (pH 6.0) prior to IF staining.

Confocal imaging of paraffin-embedded Mouse brain using Calmodulin 1/2/3 Rabbit mAb (A4885, dilution 1:100) followed by a further incubation with Cy3 Goat Anti-Rabbit IgG (H+L) (AS007, dilution 1:500) (Red). DAPI was used for nuclear staining (Blue). Objective: 40x. Perform microwave antigen retrieval with 0.01 M citrate buffer (pH 6.0) prior to IF staining.